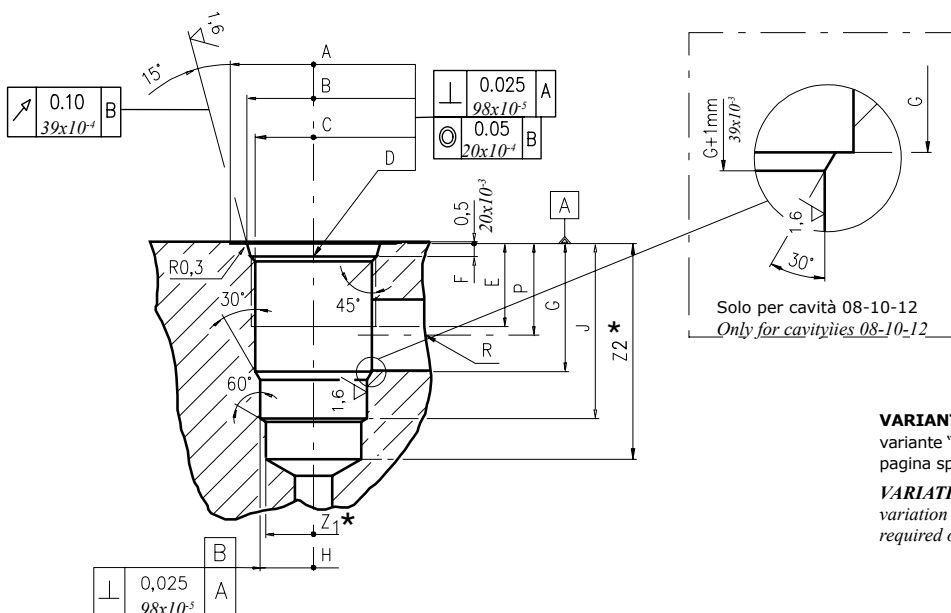


## Cavità SAE ed utensili - SAE cavities and tools

### Cavità SAE a 2 vie - 2 ways SAE cavity

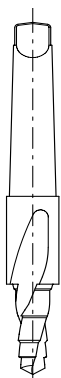


**VARIANTE "A":** le quote indicate con "\*" si riferiscono alla variante "A" e devono essere realizzate quando richiesto nella pagina specifica del prodotto alla voce "Cavità e Utensili"

**VARIATION "A":** the dimensions with "\*" are related to the variation "A" of 2 ways cavity. Features of variation "A" are required only if noted on specific product catalogue page.

Cavità Cavity	A	B ±0.05	C ±0.05	D	E	F	G	H ±0.02	J	K ±0.02	L	M ±0.02	N	P	R ØMAX	S	T ØMAX	U	V ØMAX	X ØMAX	Z1* ØMIN	Z2* MIN
08/2	mm	27	20.66	17.42	3/4-16 UNF	12.5	2.5	18.2	12.72	29.5	-	-	-	-	14	8	-	-	-	-	12	39
08/2 A	in	1.06	0.81	0.68		0.49	0.10	0.72	0.50	1.16	-	-	-	-	0.55	0.31	-	-	-	-	0.47	1.53
09/2A	mm	27	20.66	17.42	3/4-16 UNF	13.5	2.5	18	15.9	29.5	-	-	-	-	14	8.5	-	-	-	-	14	35
	in	1.06	0.81	0.68		0.53	0.10	0.71	0.62	1.16	-	-	-	-	0.55	0.35	-	-	-	-	0.57	1.43
10/2	mm	30	24	20.62	7/8-14 UNF	16	2.8	24	15.9	33.5	-	-	-	-	18.3	11	-	-	-	-	14.5	40
10/2 A	in	1.18	0.94	0.81		0.63	0.11	0.94	0.62	1.32	-	-	-	-	0.72	0.43	-	-	-	-	0.57	1.57
12/2	mm	38	29.23	24.73	1 1/16-12 UNF	19	3.5	34.15	22.25	46.8	-	-	-	-	24.5	19	-	-	-	-	21.5	60
12/2 A	in	1.50	1.15	0.97		0.75	0.14	1.34	0.87	1.84	-	-	-	-	0.96	0.75	-	-	-	-	0.85	2.36
16/2	mm	45	35.6	31.34	1 5/16-12 UNF	22	3.50	34	28.62	47	-	-	-	-	24.5	19	-	-	-	-	25.5	70
16/2 A	in	1.77	1.40	1.23		0.87	0.14	1.34	1.13	1.85	-	-	-	-	0.96	0.75	-	-	-	-	1.00	2.75

#### Sgrossatore Rougher tool



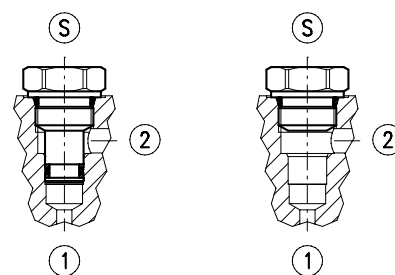
#### Alesatore Finisher tool



#### Maschiatore Tap



#### Tappi di chiusura Cavity plugs

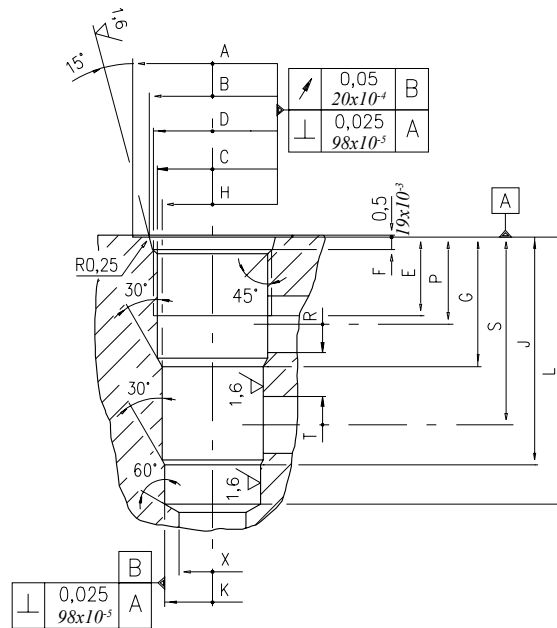


Cavità Cavity	Codici ordinazione Ordering code	Cavità Cavity	Codici ordinazione Ordering code	Cavità Cavity	Codici ordinazione Ordering code
08/2	UDPF175030	08/2	UCAC127066	08/2	UCMS3/4161
08/2A	UDPF175030	08/2A	UCAC127060	08/2A	UCMS3/4161
09/2A	UDPF174230	09/2A	UCAT159260	09/2A	UCPL140020
10/2	UDPF20503F	10/2	UCAC159080	10/2	UCMS7/8142
10/2A	UDAS24003C	10/2A	UCAC159080	10/2A	UCMS7/8142
12/2 - 12/2A	UDAS380031	12/2 - 12/2A	UDAC222661	12/2 - 12/2A	UCMS11/162
16/2 - 16/2A	UDPF313031	16/2 - 16/2A	UDAC286261	16/2 - 16/2A	UCMS15/160

Cavità Cavity	Codici ordinazione Ordering code	①	②	Ⓢ
08/2 - 08/2A	3XTP3533700	X	X	X
	4TP5531500	0	0	X
09/2A	-			
10/2 - 10/2A	3XTP3544200	X	X	X
	3XTP1542300	0	0	X
12/2 - 12/2A	3XTP3555400	X	X	X
	3XTP1552900	0	0	X
16/2 - 16/2A	3XTP3575500	X	X	X
	3XTAP838200	0	0	X

X = Chiuso - Closed  
0 = Aperto - Open

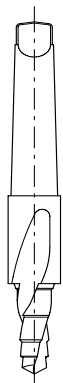
**Cavità SAE a 3 vie - 3 ways SAE cavity**



Cavità Cavity	A	B ±0,05	C ±0,05	D	E	F	G	H ±0,02	J	K ±0,02	L	M ±0,02	N	P	R øMAX	S	T øMAX	U øMAX	V øMAX	X øMAX
08/3	mm 27	20.66	17.42	3/4 -16 UNF	12.5	2.5	19.1	15.90	33.3	14.3	43.3	-	-	14.3	5.5	28.6	5.5	-	-	12.5
	in 1.06	0.81	0.68		0.49	0.10	0.75	0.62	1.31	0.56	1.70	-	-	0.56	0.22	1.12	0.22	-	-	0.49
08/3C	mm 27	20.66	17.42	3/4 -16 UNF	10	2.5	14.3	15.9	25.2	14.3	31.5	-	-	10.5	5	21.5	5	-	-	12.5
	in 1.06	0.81	0.68		0.39	0.10	0.56	0.62	1.31	0.56	1.70	-	-	0.41	0.20	0.85	0.20	-	-	0.49
10/3	mm 30	24	20.62	7/8 -14 UNF	16	2.8	23.1	17.5	39.6	15.9	47.6	-	-	18.3	6.5	34	6.5	-	-	14
	in 1.18	0.94	0.81		0.63	0.11	0.94	0.69	1.56	0.62	1.87	-	-	0.72	0.25	1.34	0.25	-	-	0.55
10/3Q	mm 30	24	20.62	7/8 -14 UNF	14.2	2.5	17.75	19.05	39.7	17.475	47.6	-	-	14.2	4.4	31.2	14	-	-	12.5
	in 1.18	0.94	0.81		0.56	0.10	0.7	0.75	1.56	0.69	1.87	-	-	0.56	0.17	1.23	0.55	-	-	0.49
12/3	mm 38	29.23	24.73	1 1/16 -12 UNF	19	3.56	36.6	23.82	63.5	22.25	75.4	-	-	24.5	16	53	16	-	-	19
	in 1.50	1.15	0.97		0.75	0.14	1.44	0.94	2.5	0.88	2.97	-	-	0.96	0.63	2.09	0.63	-	-	0.75
16/3	mm 45	35.6	28.62	1 5/16 -12 UNF	22	3.5	36.5	28.62	64.3	27.02	75.3	-	-	24.5	16	53	16	-	-	19
	in 1.77	1.40	1.13		0.87	0.14	1.44	1.13	2.53	1.06	2.96	-	-	0.96	0.63	2.09	0.63	-	-	0.75
16/3Q	mm 45	35.55	31.34	1 5/16 -12 UNF	17.5	3.5	22.1	28.6	47.6	25.425	56.85	-	-	16.5	6	37	15.5	-	-	19
	in 1.77	1.40	1.23		0.69	0.14	0.87	1.13	1.87	1	2.24	-	-	0.65	0.24	1.46	0.61	-	-	0.75
20/3	mm 58	43.6	36.55	1 5/8 -12 UNF	21	3.5	46	36.55	87.6	33.37	100	-	-	31	25.4	71.5	25.4	-	-	30
	in 2.28	1.71	1.44		0.83	0.14	1.81	1.04	3.45	1.31	3.93	-	-	1.22	1	2.81	1	-	-	1.18

**Tappi di chiusura**  
Cavity plugs

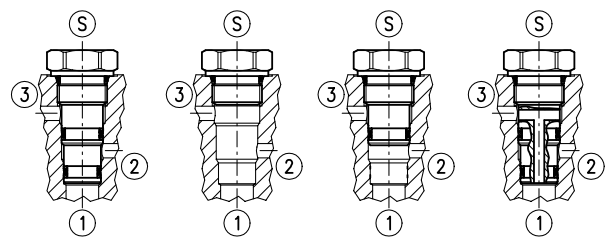
**Sgrossatore**  
Rougher tool



**Alesatore**  
Finisher tool



**Maschiatore**  
Tap



Cavità Cavity	Codici ordinazione Ordering code
08/3	UDAS207021
08/3C	UDPF174021
10/3	UDPF20503B
10/3Q	UDAS30003I
12/3	UDAS380032
16/3	UDAS450032
16/3Q	UDAS450033
20/3	UT05X55380

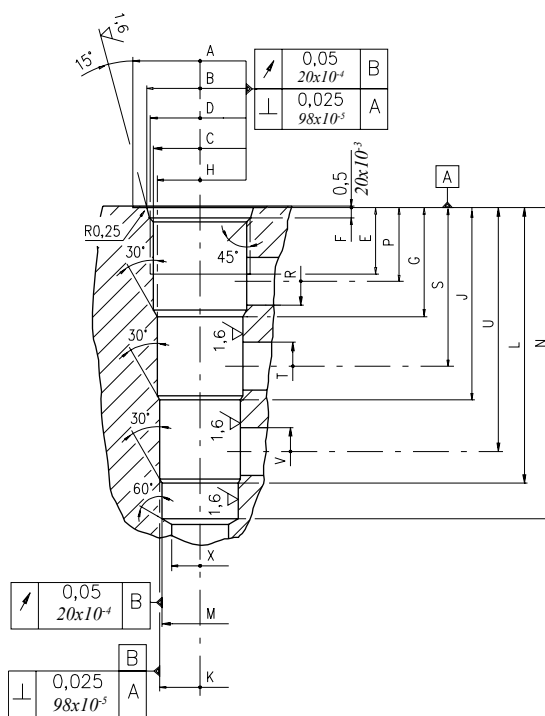
Cavità Cavity	Codici ordinazione Ordering code
08/3	UDAS159064
08/3C	UDAS159063
10/3	UDAC175080
10/3Q	UDAS190560
12/3	UDAS238060
16/3	UDAS286261
16/3Q	UDAS286060
20/3	UT05X55390

Cavità Cavity	Codici ordinazione Ordering code
08/3	UCMS3/4161
08/3C	UCMS3/4161
10/3	UCMS7/8142
10/3Q	UCMS7/8142
12/3	UCMS11/162
16/3	UCMS15/160
16/3Q	UCMS15/160
20/3	UCMS15/812

Cavità Cavity	Codici ordinazione Ordering code	①	②	③	Ⓢ
08/3	XTAP324541	X	X	X	X
	3XTAP822150	0	0	0	X
	XTAP324400	0	0	X	X
	XTAP324540	0	X	0	X
08/3C	XTAP824370	X	X	X	X
	3XTAP822150	0	0	0	X
	3XTP3545700	X	X	X	X
10/3	3XTP1542300	0	0	0	X
	3XTP3545701	0	X	0	X
	XTAP327350	0	0	X	X
10/3Q	XTAP327573	X	X	X	X
	3XTP3558200	X	X	X	X
12/3	3XTP1552900	0	0	0	X
	3XTP3558201	0	X	0	X
	3XTP3578400	X	X	X	X
16/3	3XTAP838200	0	0	0	X
	XTAP341570	X	X	X	X

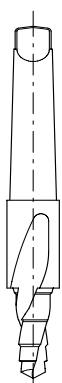
X = Chiuso - Closed / 0 = Aperto - Open

Cavità SAE a 4 vie - 4 ways SAE cavity



Cavità Cavity	A	B $\pm 0,05$	C $\pm 0,05$	D	E	F	G	H $\pm 0,02$	J	K $\pm 0,02$	L	M $\pm 0,02$	N	P	R $\phi \text{MAX}$	S $\phi \text{MAX}$	T $\phi \text{MAX}$	U	V $\phi \text{MAX}$	X $\phi \text{MAX}$
08/4	mm 28.00 in 1.10	20.66 0.81	17.42 0.68	3/4-16 UNF	12.5 0.49	2.5 0.10	19.1 0.75	15.9 0.62	33.3 1.31	14.3 0.56	47.6 1.87	12.72 0.50	57.6 2.27	14.3 0.56	5.5 0.22	28.6 1.12	5.5 0.22	42.9 1.69	5.5 0.22	11 0.43
10/4	mm 30 in 1.18	24.00 0.94	20.62 0.81	7/8-14 UNF	16 0.63	2.8 0.11	23.6 0.93	19.08 0.75	39.6 1.56	17.5 0.69	55.4 2.18	15.9 0.62	63.5 2.50	18.3 0.72	6.5 0.26	34 1.34	6.5 0.25	50 1.97	6.5 0.25	14 0.55
12/4	mm 38 in 1.50	29.23 1.15	24.73 0.97	1 1/16-12 UNF	19 0.75	3.56 0.14	29.5 1.16	23.82 0.94	51.5 2.03	22.25 0.87	73.6 2.90	20.65 0.81	83.33 3.28	21.5 0.85	11 0.43	43.5 1.71	11 0.43	66 2.60	11 0.43	19 0.75
16/4	mm 45 in 1.77	35.60 1.40	31.34 1.23	1 5/16-12 UNF	22 0.87	3.5 0.14	36.5 1.44	28.62 1.13	64.3 2.53	27.02 1.06	92.07 3.62	25.45 1.00	104 4.09	24.6 0.97	16 0.63	53 2.09	16 0.63	81.5 3.21	16 0.63	19 0.75

Sgrossatore  
Rougher tool



Cavità Cavity	Codici ordinazione Ordering code
08/4	UDAS207020
10/4	UDAS30003H
12/4	UDAS292020
16/4	UDAS356030

Alesatore  
Finisher tool



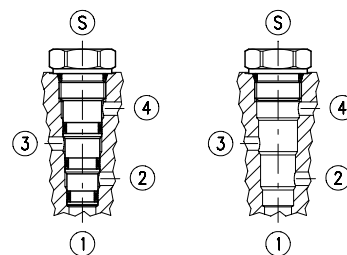
Cavità Cavity	Codici ordinazione Ordering code
08/4	UDAS170080
10/4	UDAS190861
12/4	UDAS238260
16/4	UDAS286262

Maschiatore  
Tap



Cavità Cavity	Codici ordinazione Ordering code
08/4	UCMS3/4161
10/4	UCMS7/8142
12/4	UCMS11/162
16/4	UCMS15/160

Tappi di chiusura  
Cavity plugs



Cavità Cavity	Codici ordinazione Ordering code	①	②	③	④	Ⓢ
08/4	3XTP3536500	X	X	X	X	X
	3XTAP822150	0	0	0	0	X
10/4	3XTP3548301	X	X	X	X	X
	3XTP1542300	0	0	0	0	X
12/4	3XTP3559300	X	X	X	X	X
	3XTP1552900	0	0	0	0	X
16/4	3XTP357B300	X	X	X	X	X
	3XTAP838200	0	0	0	0	X

X = Chiuso - Closed  
0 = Aperto - Open

