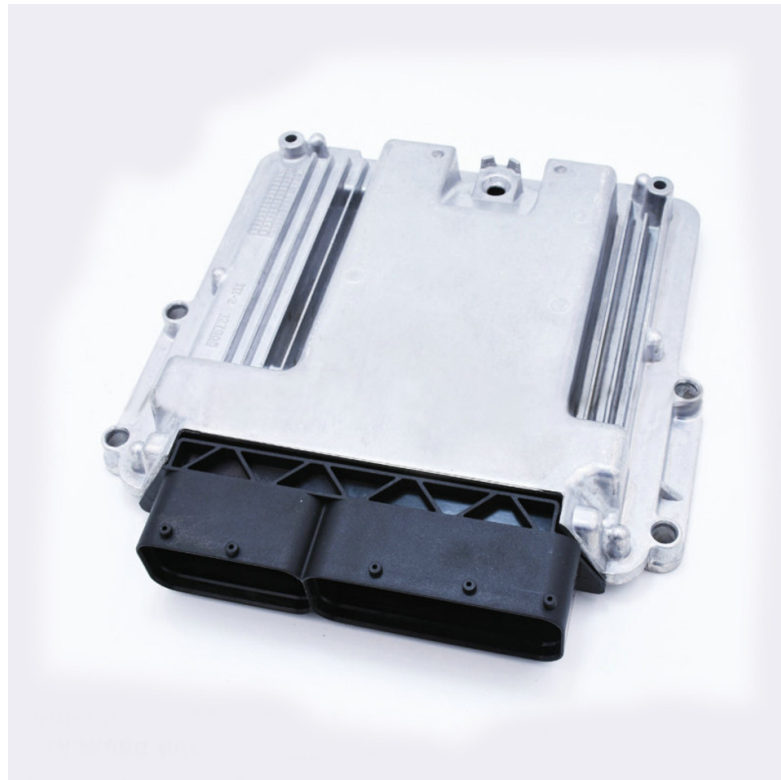


# Walvoil CED1200S Control Unit for Safety Related Applications

At bauma 2019, Walvoil will exhibit its CED1200S featuring Hardware Category 2, enabling use in applications up to Performance Level D/SIL 2.

WALVOIL S.P.A. — FEBRUARY 21, 2019



WALVOIL

The CED1200S from Walvoil is the first component of a new family of control units designed for safety related applications.

- Features Hardware Category 2, enabling use in applications up to Performance Level D/SIL 2

- Programmable according to IEC 61131-3 standard with PHC Studio Integrated Development Environment (CED1200W)
- Completely sealed and protected against water and dust ingress (IP67/IPx9K)
- All PWM power outputs are available with current closed loop for applications with proportional pressure reducing valves
- Suitable for 12V and 24V applications thanks to 8–32V power supply input range
- Includes 24 general purpose inputs (analog, digital, frequency), two CANbus ports and 5V sensors supply output