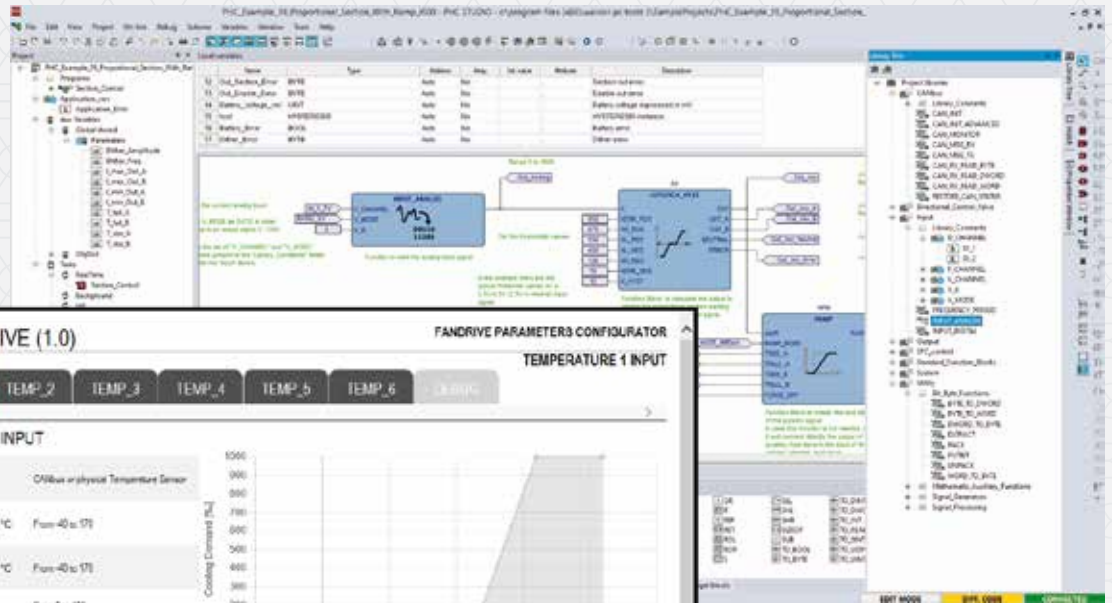




NEW

PHC Studio Suite

Walvoil Development Tools



CED400W - CANBUS FANDRIVE (1.0)

MAIN PAGE MONITOR TEMP_1 TEMP_2 TEMP_3 TEMP_4 TEMP_5 TEMP_6 CONFIG

FANDRIVE PARAMETERS CONFIGURATOR

TEMPERATURE 1 INPUT

Temperature Sensor Input Type: **PHYSICAL SENSOR** CANbus physical Temperature Sensor

Minimum Cooling Demand Temperature: **110** °C From -40 to 170

Maximum Cooling Demand Temperature: **140** °C From -40 to 170

Weighting Factor: **0** From 0 to 100

CANbus Message ID: **0X00000000** From 0x00000000 to 0xFFFFFFFF

CANbus Message ID Complete Flag: **FALSE** TRUE: All the ID is used, FALSE: Only the P20 bit part of the ID is used

CANbus Message Timeout: **0** min From 0 to 65535

Signal Length: **0** bit From 0 to 2

Signal Message: **0**

Input Pin: **0**

Graph: Cooling Demand (%) vs Temperature (°C)

Graph Data: The graph shows a linear relationship between temperature and cooling demand. The x-axis represents Temperature (°C) from -50 to 250. The y-axis represents Cooling Demand (%) from 0 to 1000. The demand is 0% for temperatures up to 100°C and then increases linearly to 1000% at 200°C.

WST PRO
WALVOIL SERVICE TOOL

SOFTWARE SOLUTIONS BY WALVOIL SPA
A MEMBER OF INTERPUMP GROUP

PHC STUDIO

SOFTWARE SOLUTIONS BY WALVOIL SPA
A MEMBER OF INTERPUMP GROUP

DEVELOPMENT TOOLS FOR WALVOIL ELECTRONIC COMPONENTS

The new **PHC STUDIO SUITE** includes the latest release of **PHC STUDIO (3.0)** and the new **WST pro** (Advanced Walvoil Service Tool).

Through a single installation it's now possible to manage all Walvoil development tools.

PHC STUDIO is an integrated development environment (IDE). It develops and integrates customized application logics in Walvoil electronic control units thanks to the 5 programming languages of the IEC 61131-3 standard.

In the latest version (3.0) the new features are:

- Integration with **WST pro**
- Addition of functions within the base libraries
- Minor Buxfixes

The new **WST pro** can be connected to all Walvoil electronic components. It integrates the most used service tools (bootloader, configurator, diagnostics) in a single environment. The new ergonomic and intuitive interface allows to perform these operations:

- Calibrate and configure the applications
- Monitor I/O signals in Real Time
- Execute in-field system Diagnostic
- Update the Firmware and Software in the field
- Create a customized graphic interface

