



EW..M type directional solenoid valves - 2 way / 2 positions

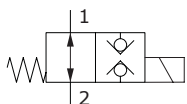
- Direct acting
- Poppet type
- Normally open and closed configurations
- With check in both directions
- From SAE08 to SAE10 cavities

Technical specifications and diagrams are measured with mineral oil of 46 cSt viscosity at 40°C (104°F) temperature.

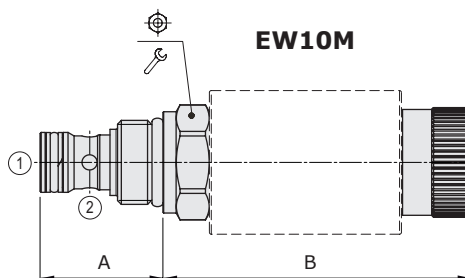
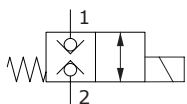
	EW08M	EW10M
Nominal flow	20 l/min (5.28 US gpm)	40 l/min (10.6 US gpm)
Max. pressure	250 bar (3600 psi)	350 bar (5075 psi)
Oil leakage	at 210 bar (3050 psi) 0.25 cm ³ /min (0.015 in ³ /min)	0.25 cm ³ /min (0.015 in ³ /min)
Fluid	mineral based oil	
Viscosity	10-200 cSt	
Max level of contamination	18/16/13 ISO4406	
Fluid temperature	with NBR seals with FPM seals	from -20°C (-4°F) to 80°C (176°F) from -20°C (-4°F) to 100°C (212°F)
Environmental temp. for working conditions	from -20°C (-4°F) to 50°C (122°F)	
Cavity	SAE 08/2	SAE 10/2
Coil type*	BER	BH
Nominal voltages	12 VDC - 24 VDC ± 10%	
Power rating	22.8 W (12 VDC) - 22.5 W (24 VDC)	33 W
Weight	0.15 kg (0.33 lb)	0.30 kg (0.66 lb)

NOTE - For different conditions, please contact Walvoil Sales Dpt. - *For coils further features see from page 206.

Normally open configuration



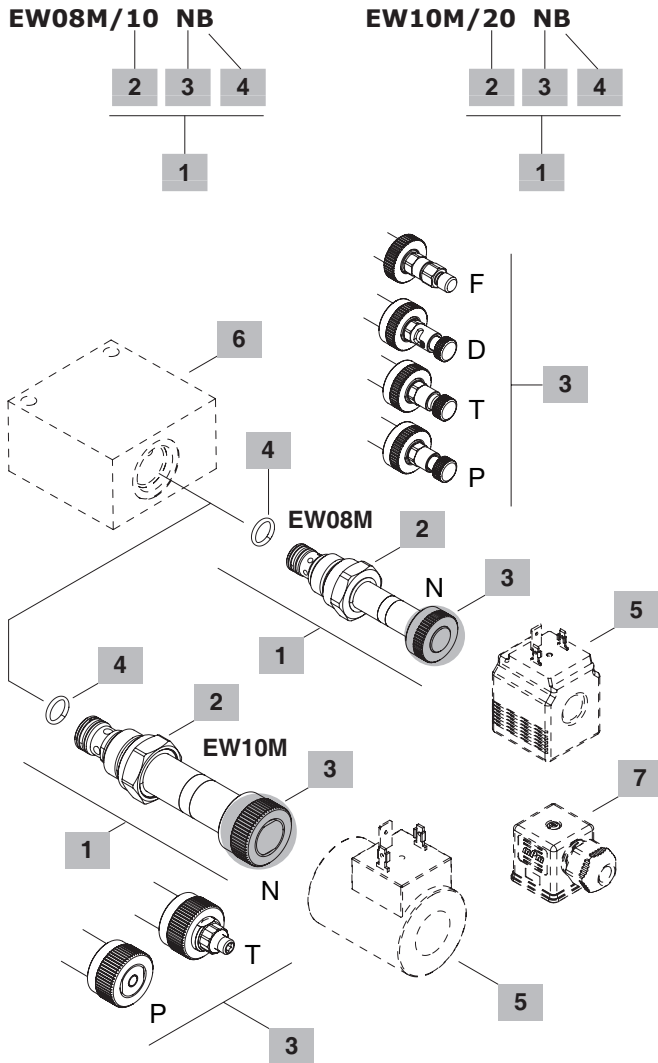
Normally closed configuration



Valve type	A		B				Nm	lbft
	mm	in	mm	in				
EW08M/10NB	28	1.10	60.2	2.37	24	30	22	
EW08M/20NB	28	1.10	62.5	2.46	24	30	22	
EW10M/20NB	32.5	1.28	81.3	3.20	27	50	37	

For dimensions with different type of emergency see page 213

Ordering codes and description composition



1 Cartridges

TYPE	CODE	DESCRIPTION
SAE cavity 08/2		
EW08M/10NB	0EW08002014	Normally open (N.O.) without emergency
EW08M/10FB	0EW08002015	(N.O.) pull button emergency
EW08M/10TB	0EW08002016	(N.O.) screw type emergency
EW08M/20NB	0EW08002018	Normally closed (N.C.) without emergency
EW08M/20PB	0EW08002019	(N.C.) push button emergency
EW08M/20TB	0EW08002020	(N.C.) screw type emergency
EW08M/20DB	0EW08002021	(N.C.) push type with detent emergency
SAE cavity 10/2		
EW10M/20NB	0EW10002008	Normally closed (N.C.) without emergency
EW10M/20TB	0EW10002009	(N.C.) screw type emergency
EW10M/20PB	0EW10002010	(N.C.) push button emergency

2 Spool

TIPO	DESCRIZIONE
1	Configurazione normalmente aperta
2	Configurazione normalmente chiusa

3 Emergency

TYPE	DESCRIPTION
N	Without emergency
P	Push button type (N.C.)
T	Screw type (N.C. - N.O. for EW08M / N.C. for EW10M)
D	Push type with detent (N.C.)
F	Pull button type (N.O.)

4 Seals

TYPE	DESCRIPTION
B	NBR (Buna) o-ring seals, std configuration
V	FPM (Viton) o-ring seals, contact Sales Dept.

5 Coils

TYPE	CODE	DESCRIPTION
BER 12VDC	4SLE001200	12VDC-ISO4400 coil for EW08M
BH 12VDC	4SLD001200	12VDC-ISO4400 coil for EW10M

For complete coils list see from page 206

6 Valve body

TYPE	CODE	DESCRIPTION
SAE 08/2-G 3/8	3CC0820C11	Aluminium body for cavity 08 valve, G3/8 std thread
SAE 10/2-G 3/8	3CC1020C11	Aluminium body for cavity 10 valve, G3/8 std thread

Note: aluminium body can stand up to 210 bar (3050 psi)
For steel bodies or different threading see from page 215

7 Connector

TYPE	CODE	DESCRIPTION
ISO4400	4CN1009995	Connector

For complete connectors list see from page 206

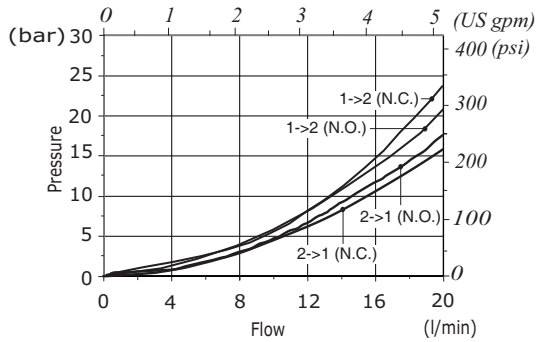
Directional control valves

Directional solenoid valves - 2 way / 2 positions

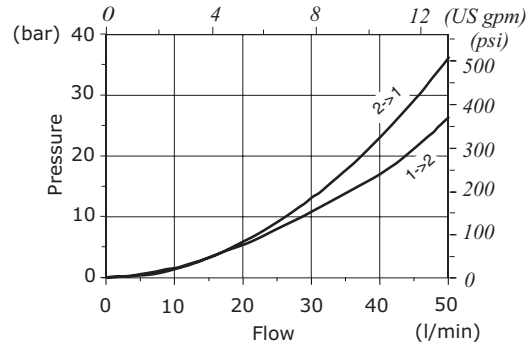
EW..M type

Rating diagrams

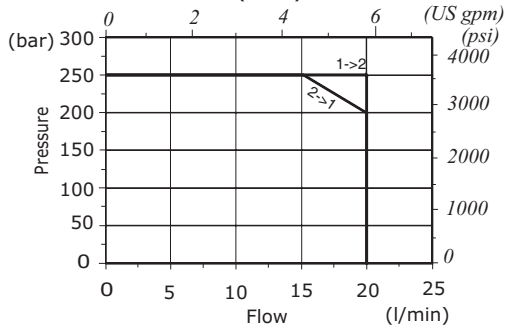
EW08M pressure drop vs. flow



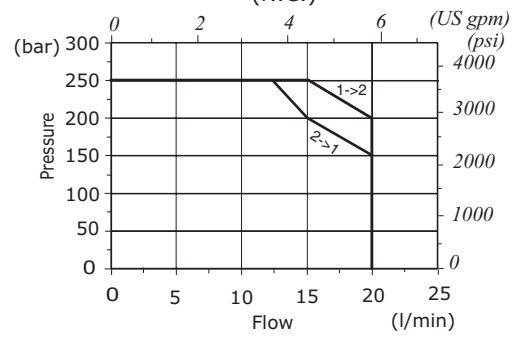
EW10M pressure drop vs. flow (N.C.)



EW08M performance limit (N.O.)



EW08M performance limit (N.C.)



EW10M performance limit (N.C.)

