



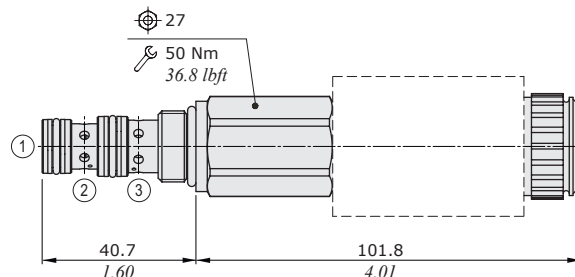
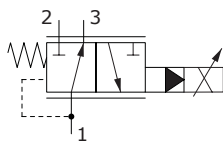
RP08X type pressure reducing valves - 3 way

- Solenoid proportional type, pilot operated
- With relieving (NO)
- Spool type

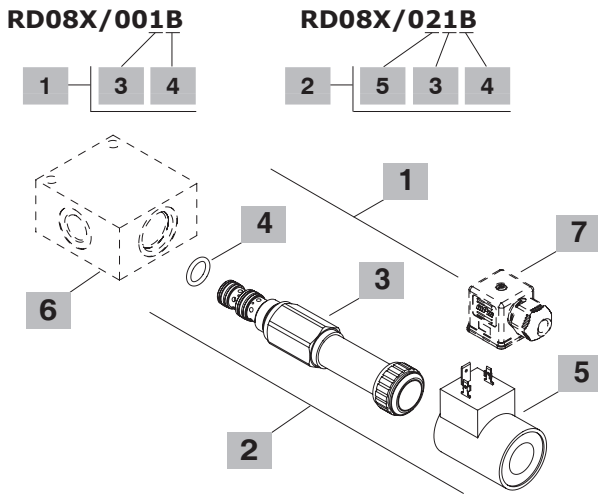
Technical specifications and diagrams are measured with mineral oil of 46 cSt viscosity at 40°C (104°F) temperature.

| RP08X | | |
|--|----------------|------------------------------------|
| Nominal flow | | 15 l/min (4 US gpm) |
| Max. pressure | | 350 bar (5100 psi) |
| Oil leakage | | - |
| Fluid | | mineral based oil |
| Viscosity | | 10-200 cSt |
| Max level of contamination | | 18/16/13 ISO4406 |
| Fluid temperature | with NBR seals | from -20°C (-4°F) to 80°C (176°F) |
| | with FPM seals | from -20°C (-4°F) to 100°C (212°F) |
| Environmental temp. for working conditions | | from -20°C (-4°F) to 50°C (122°F) |
| Cavity | | SAE 08/3 |
| Coil type* | | BDP19 |
| Nominal voltages | | 12 VDC - 24 VDC |
| Power rating | | 13 W (12 VDC) - 13.25 W (24 VDC) |
| Max control current | | 12 V -> 1.9 A - 24 V -> 0.9 A |
| Dither frequency | | 150 Hz |
| Hysteresis | | ≤4% |
| Weight | | 0.56 kg (1.23 lb) |

NOTE - For different conditions, please contact Walvoil Sales Dpt. - For coils further features see from page 206.



Ordering codes and description composition



1 Cartridges

| TYPE | CODE | DESCRIPTION |
|-------------------|-------------|-------------------------|
| RP08X/001B | ORP08002010 | Pressure range 1 |
| RP08X/002B | ORP08002011 | Pressure range 2 |
| RP08X/003B | ORP08002012 | Pressure range 3 |
| RP08X/004B | ORP08002013 | Pressure range 4 |

2 Complete cartridges

| TYPE | CODE | DESCRIPTION |
|-------------------|-------------|---------------------------------|
| RP08X/021B | ORP08002007 | Pressure range 1 , 12VDC |
| RP08X/022B | ORP08002001 | Pressure range 2 , 12VDC |
| RP08X/023B | ORP08002002 | Pressure range 3 , 12VDC |
| RP08X/024B | ORP08002003 | Pressure range 4 , 12VDC |

3 Pressure range

| TYPE | DESCRIPTION |
|----------|---|
| 1 | Pressure range 10÷50 bar (145÷725 psi) |
| 2 | Pressure range 50÷200 bar (725÷2900 psi) |
| 3 | Pressure range 80÷350 bar (1160÷5075 psi) |
| 4 | Pressure range 20÷100 bar (290÷1450 psi) |

4 Seals

| TYPE | DESCRIPTION |
|----------|--|
| B | NBR (Buna) o-ring seals, std configuration |
| V | FPM (Viton) o-ring seals, contact Sales Dept. |

5 Coils

| TYPE | CODE | DESCRIPTION |
|-----------------------|------------|--------------------|
| 2) BDP19 12VDC | 4SL5000120 | 12VDC-ISO4400 coil |
| 4) BDP19 24VDC | 4SL5000240 | 24VDC-ISO4400 coil |

For complete coils list see page 206

6 Valve body

| TYPE | CODE | DESCRIPTION |
|----------------------|------------|---|
| SAE 08/3-SAE8 | 3CC0830K11 | Aluminium body for cavity 10 valve, SAE8 std thread |

Note: aluminium body can stand up to 210 bar (3050 psi)
For steel bodies or different threading see from page 217

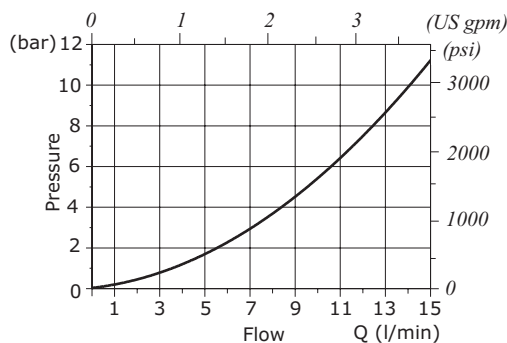
7 Connector

| TYPE | CODE | DESCRIPTION |
|----------------|------------|-------------|
| ISO4400 | 4CN1009995 | Connector |

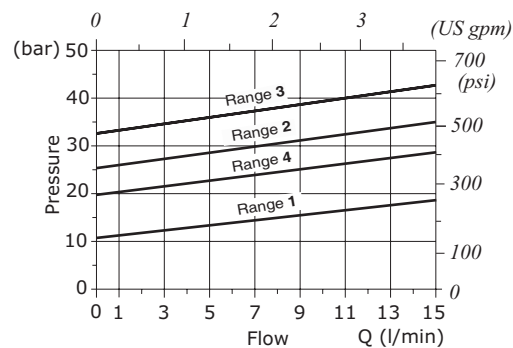
For complete connectors list see from page 206

Rating diagram

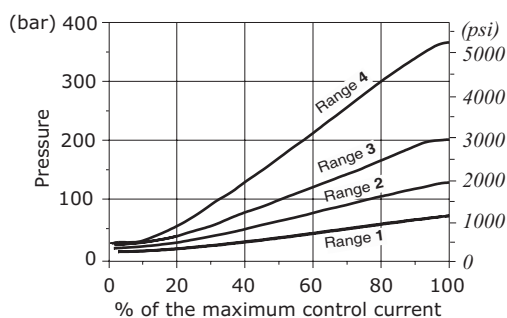
Pressure drop vs. flow 2->1
with de-energized coil



Pressure drop vs. flow 1->3



Pressure reducing vs. control current



Reducing/relieving pressure vs. flow
for % of control current - Pressure range 2

