

NEW

# SVM150 SVM450 SVM600

Hydraulic pilot valves with lever operation  
and electromagnetic connection



**A simple and flexible solution  
for different applications**



# SVM150 • SVM450 • SVM600 Hydraulic pilot v



**W**alvoil is pleased to present the new series of lever operated pilot valves: SVM150, SVM450 and SVM600. These pilot valves can be used where high sensitivity and low working force is required in the remote control of mobile hydraulic systems applications.

## Working conditions

Nominal flow	from 5 to 20 l/min- from 1.32 to 5.28 US gpm	
Operating pressure	<i>inlet port P</i>	from 30 to 100 bar from 435 to 1450 psi
Back pressure, max	<i>on outlet port T</i>	3 bar - 43 psi
Hysteresis, max.		0,5 bar - 7.25 psi
Internal leakage (ogni utilizzo)	<i>P-&gt;T, at 30 bar (435 psi)</i>	max 18 cm <sup>3</sup> /min-1.1in <sup>3</sup> /min
Fluid		Mineral oil
Fluid temperature range	with NBR (BUNA-N) seals operating range	from -10° to 80°C from 14°F to 176°F da 15 a 75 mm <sup>2</sup> /s from 15 to 75 cSt
Viscosity	<i>min.</i> <i>max.</i>	12 mm <sup>2</sup> /s - 12 cSt 400 mm <sup>2</sup> /s - 400 cSt
Contamination level		-/15/12 (ISO-DIN 4406)
Ambient temperature for working conditions	<i>without electric devices</i> <i>with electric devices</i>	from -40° to 60° C from -40°F to 140° F from -20° to 50° C from -4°F to 122°F
Fitting torque (max)		30 Nm - 22.13 lbft
Mass		1,8 kg - 3.97 lb (SVM150) 3 kg - 6.61 lb (SVM450) 4,9 kg - 10.80 lb (SVM600)

## Electromagnetic connection

Nominal tension	12 VDC - 24 VDC ±10%
Resistance	18 Ω - 70 Ω
Absorbed power (each solenoid)	8.2 W

*Note: for different conditions, please contact Walvoil Sales Dpt.*

## Standard threads – reference standard

	BSP	UN-UNF
THREAD ACCORDING TO	ISO 228/1	ISO 263
	BS 2779	ANSI B1.1 unified
CAVITY ACCORDING TO	ISO 1179	11926
	SAE	J1926
	DIN 3852-2 shape X or Y	

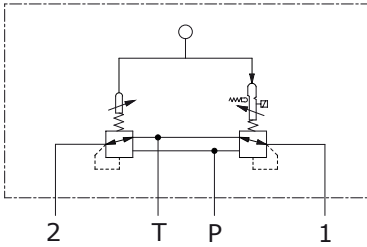
## Ports

MAIN	BSP	UN-UNF
Inlet <b>P</b>	G 1/4	7/16-20 (SAE4)
Work ports	G 1/4	7/16-20 (SAE4)
Outlet <b>T</b>	G 1/4	7/16-20 (SAE4)

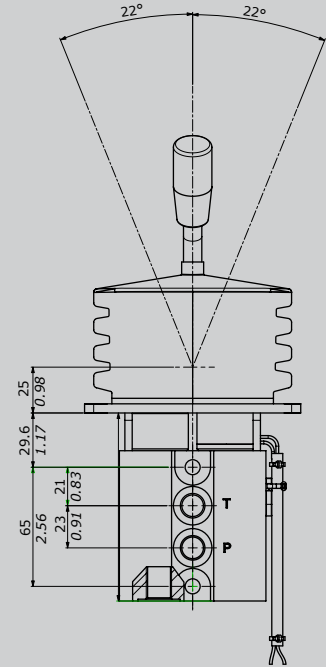
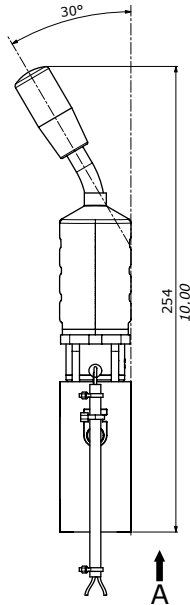
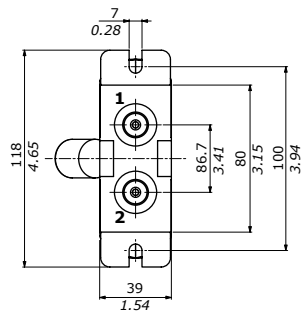


SVM150

Hydraulic circuit

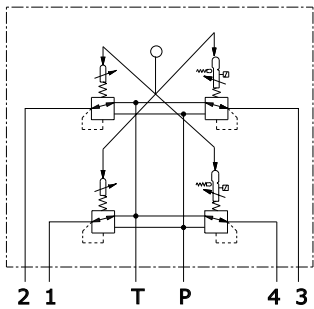


View from A

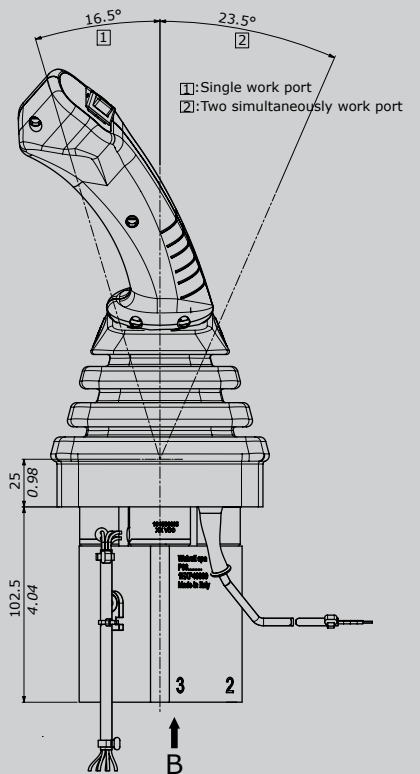
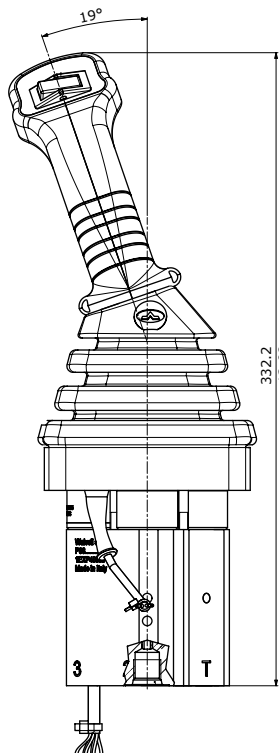
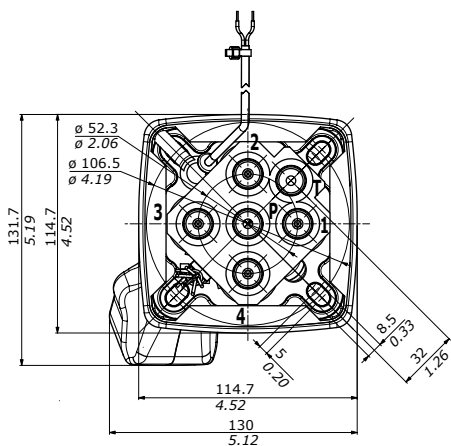


SVM450

Hydraulic circuit

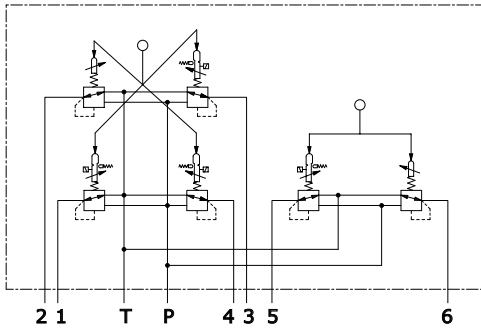


View from B

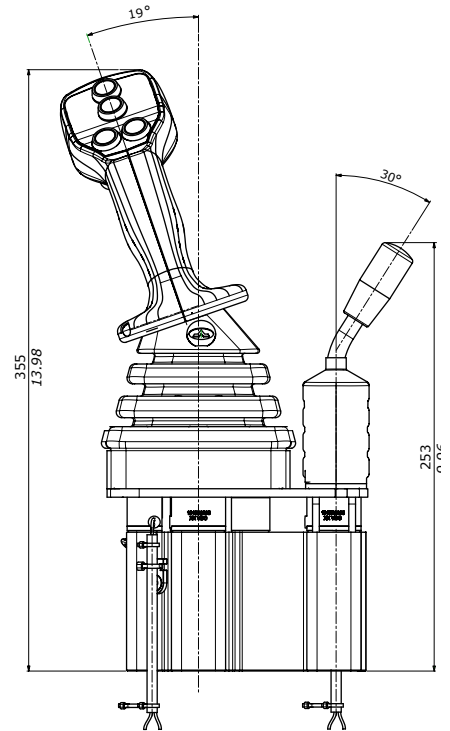
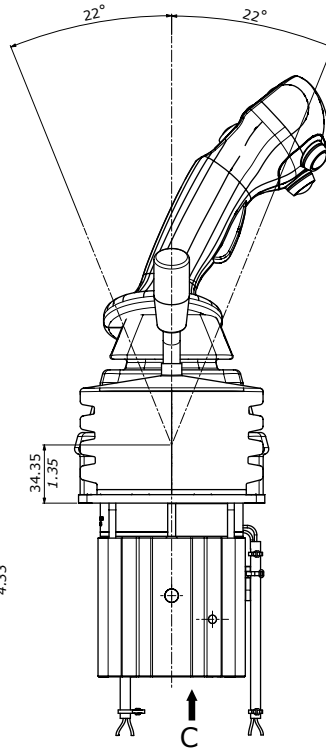
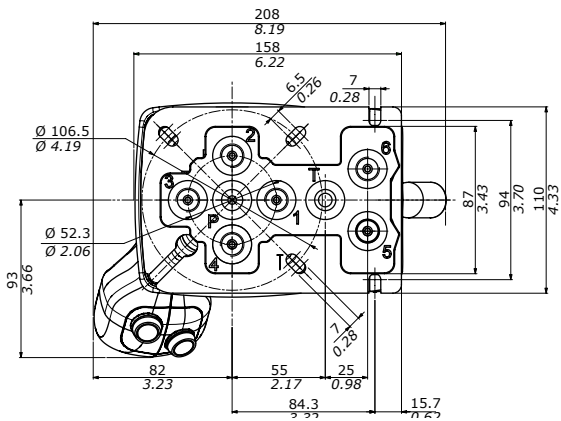


## SVM600

### Hydraulic circuit



### View from C



## Features

These new SVM series pilot valves are made with aluminium bodies, that allow smaller dimensions and weight reduction.

SVM150: pilot control valve single axle for one working section.

SVM450: pilot control valve double axle for two working sections.

SVM600: combined pilot control valve (double axle-single axle for three working sections).

The peculiarities of this series are the electromagnetic connection available in each working direction, high sensitivity and low acting forces.

## Applications

Particularly indicated for skid steer loader, wheeled loaders, backhoe loaders, drilling machines.

## Configurations and options

SVM150, SVM450 and SVM600 series can be configured with Walvoil ergonomic handles range.