

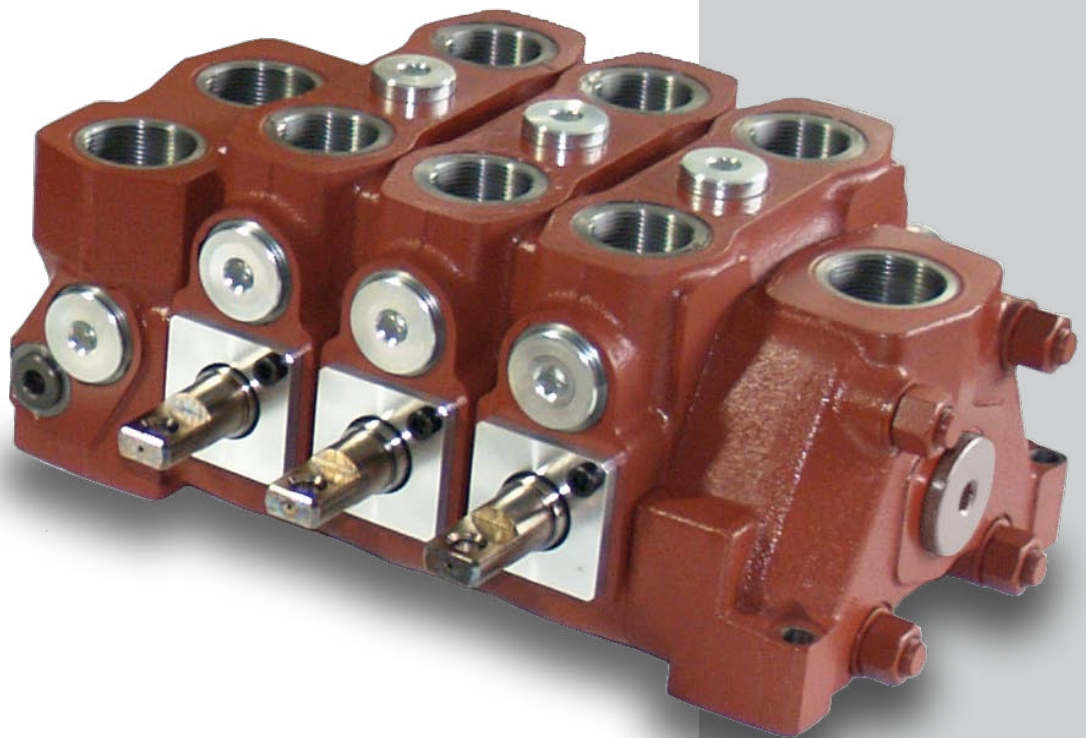
NEW

SDS320

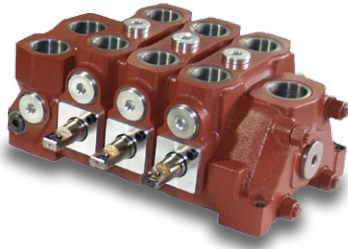
Open-Center Directional Sectional Valve



**An effective solution
for high flow applications**



SDS320 Open-Center Directional Sectional Valve



- From 1 to 10 working sections
- Open center configuration
- Check valve on each working section
- Diameter 30 mm (1.18 in) interchangeable spools
- Antishock and anticavitation port valves
- Hydraulic or mechanical spool control kit

Walvoil is pleased to present the new SDS320 directional sectional valve, particularly indicated for stackers, big excavators, wheel loaders and naval establishments.

Working conditions

Operating pressure, max.	315 bar	4600 psi
Nominal flow	400 l/min	105 US gpm
Internal leakage	13 cm ³ /min	0.79 in ³ /min
Fluid	Mineral based oil	
Fluid Temperature	with NBR (BUNA-N) seals	from -20°C to 80°C from -4°F to 176°F
	with FPM (VITON) seals	from -20°C to 100°C from -4°F to 212°F
	operating range	(from 15 to 75) mm ² s (from 15 to 75) cSt
Viscosity	min.	12 mm ² s 12 cSt
	max.	400 mm ² s 400 cSt
Max. contamination level	19/16 - ISO 4406	
Ambient temperature for working conditions	from -40°C to 60°C	from -40°F to 140°F
Tie rod tightening torque	130 Nm	96 lbft

Note: for different conditions, please contact Walvoil Sales Dpt.

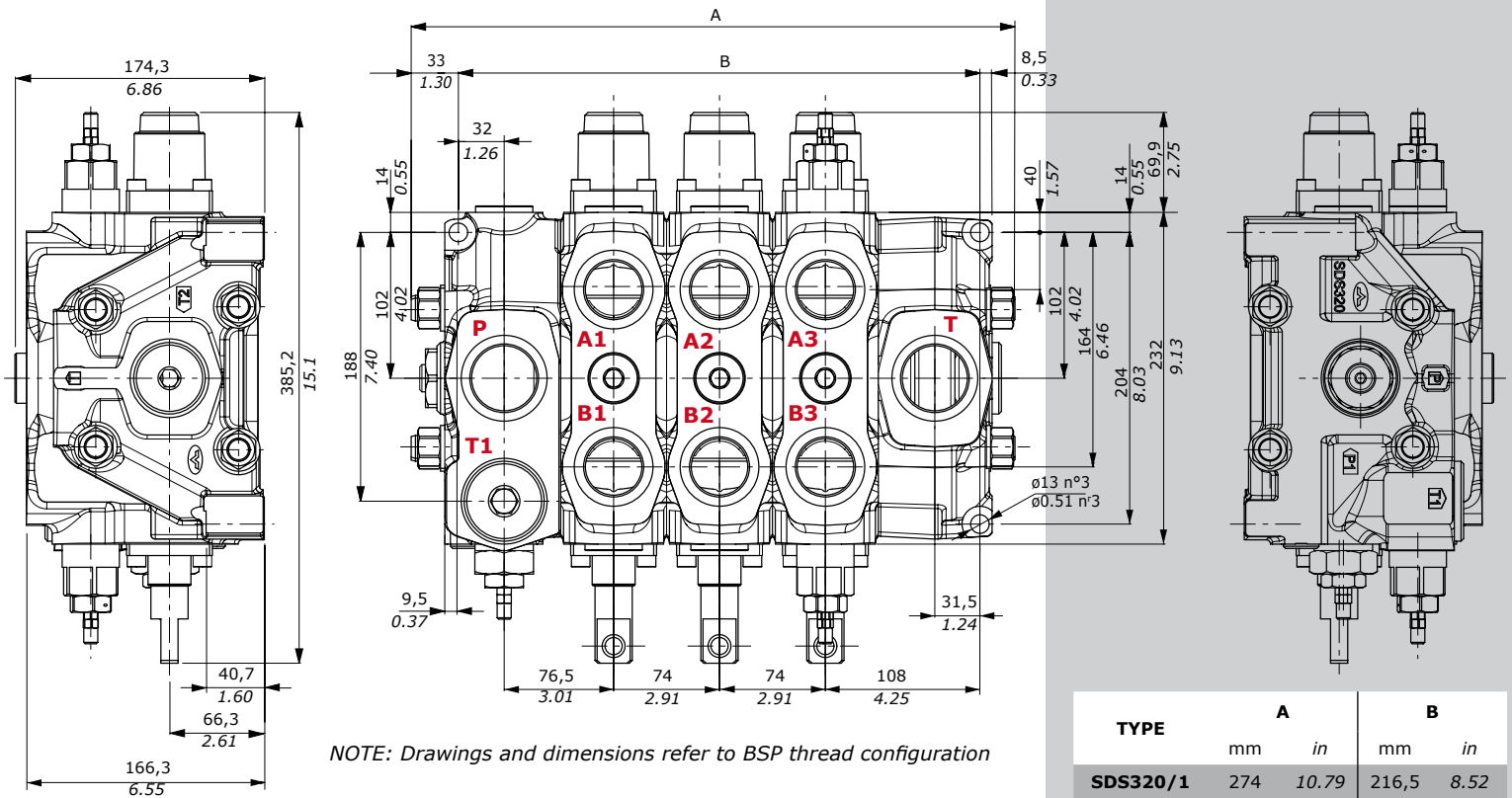
Standard threads – reference standard

Ports	BSP	UN-UNF
THREAD ACCORDING TO	ISO 228/1	ISO 263
	BS 2779	ANSI B1.1 unified
CAVITY ACCORDING TO	ISO 1179	11926
	SAE	J1926
	DIN 3852-2 shape X or Y	

MAIN PORTS	BSP	UN-UNF
Inlet P	G 1-1/2	1 7/8-12 (SAE24)
Inlet P1	G 1-1/4	1 5/8-12 (SAE20)
Outlet T, T1	G 1-1/2	1 5/8-12 (SAE20)
Outlet T2	G 1-1/4	1 5/8-12 (SAE20)
Ports A and B	G 1-1/4	1 5/8-12 (SAE20)
Port M	G 1/4	7/16-20 (SAE4)

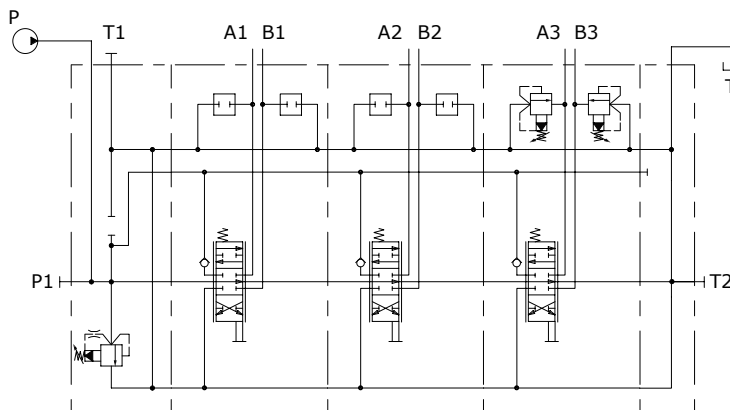
Note: SAE3000 flanging on request: please contact Walvoil Sales Dpt.

Dimensions

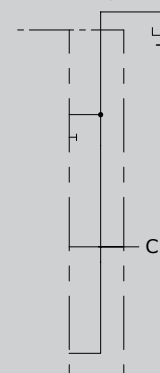


TYPE	A		B	
	mm	in	mm	in
SDS320/1	274	10.79	216,5	8.52
SDS320/2	348	13.70	290,5	11.44
SDS320/3	422	16.61	364,5	14.35
SDS320/4	496	19.52	438,5	17.26
SDS320/5	570	22.44	512,5	20.18
SDS320/6	644	25.35	586,5	23.09
SDS320/7	718	28.27	660,5	26
SDS320/8	792	31.18	734,5	28.92
SDS320/9	866	34.09	808,5	31.83
SDS320/10	940	37.01	882,5	34.74

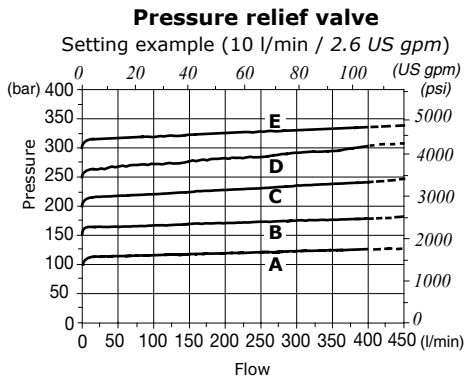
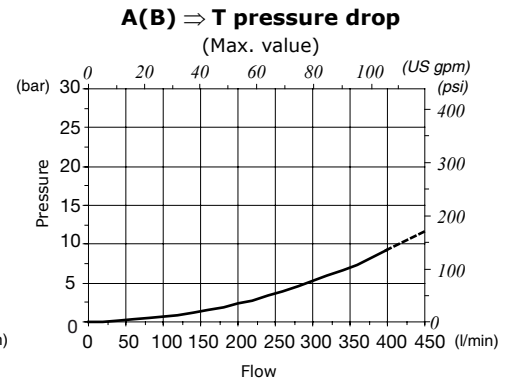
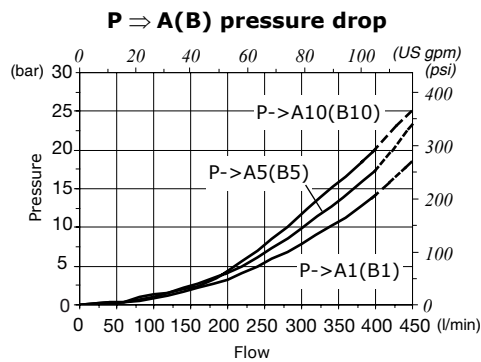
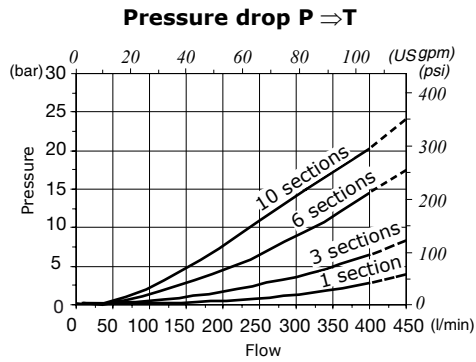
Hydraulic circuit



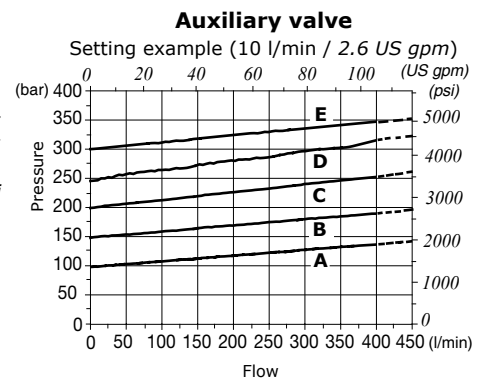
With carry-over



Performance data



A=100 bar / 1450 psi
B=150 bar / 2200 psi
C=200 bar / 2900 psi
D=250 bar / 3600 psi
E=300 bar / 4350 psi



Features

The SDS320 is an open center directional valve, available from 1 to 10 sections.

It's equipped with pilot operated main relief valve on inlet section and check valve on each working section.

Several types of spools, control kit and port valves are available.

Applications

This new sectional valve can be used in high flow applications: stackers, big excavators, wheel loaders and naval establishments.

Configurations and options

- High-side inlet/outlet ports
- Pressure gauge port
- Optional carry-over
- Single and double effect spools with floating circuit
- Mechanical and proportional hydraulic controls
- Parallel and series circuits
- Anticavitation, pilot operated antishock, pilot operated antishock and anticavitation port valves

