



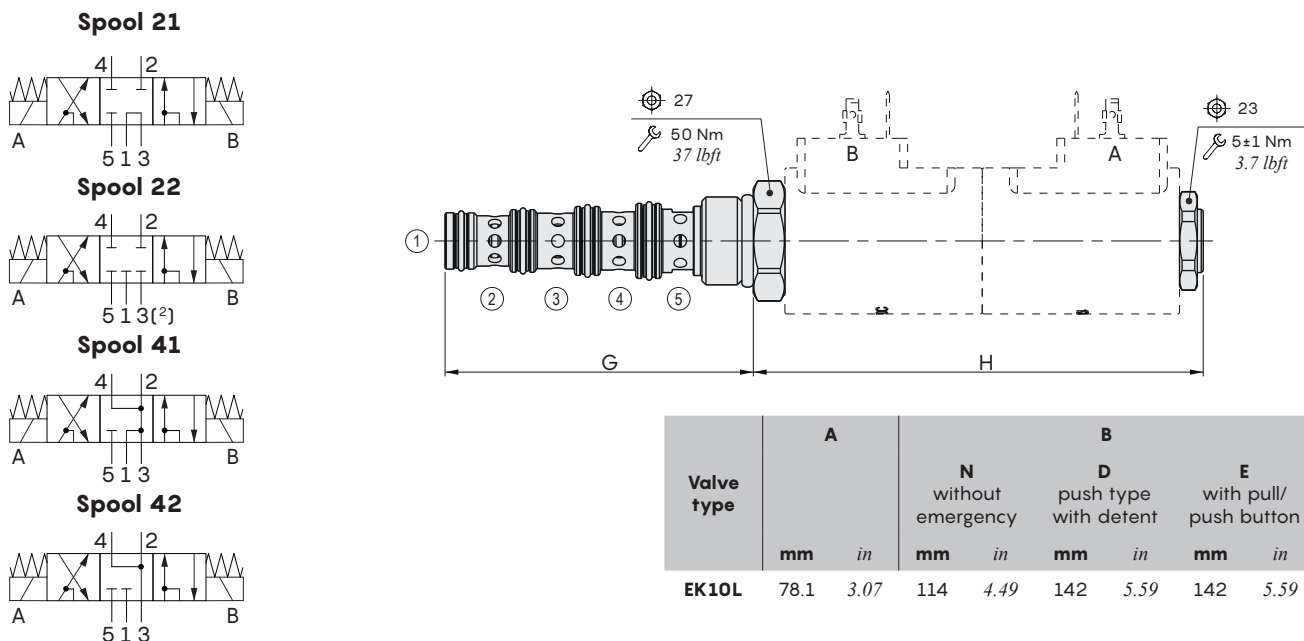
## EK10L type directional solenoid valves – 5 way / 3 positions

- Spool type
- Direct acting with proportional solenoid
- Different types of emergencies available
- External zinc-plated and corrosion-proof components

Technical specifications and diagrams are measured with mineral oil of 46 cSt viscosity at 40°C (104°F) temperature.

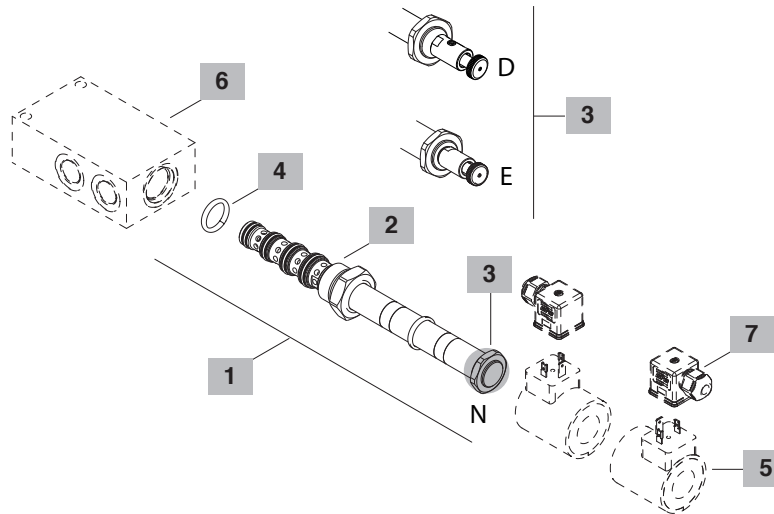
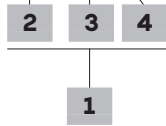
		EK10L
Nominal flow		20 l/min (5.3 US gpm)
Max. pressure		250 bar (3600 psi)
Oil leakage	at 210 bar (3050 psi)	80 cm <sup>3</sup> /min (4.88 in <sup>3</sup> /min)
Fluid		mineral based or synthetic hydraulic fluid with lubricating properties
Viscosity		10-200 cSt
Max level of contamination		18/16/13 ISO4406
Fluid temperature	with NBR seals+Polyurethane with FPM seals	from -25°C (-13°F) to 90°C (194°F) from -20°C (-4°F) to 110°C (230°F)
Environmental temp. for working conditions		from -20°C (-4°F) to 60°C (140°F)
Cavity		SAE 10/5
Coil type*		BC
Nominal voltages		12VDC - 24 VDC ± 10%
Power rating		26 W (12VDC - 24VDC)
Weight		0.720 kg (1.59 lb)

NOTE - For different conditions, please contact Walvoil Sales Dpt. - \*For coils further features see from page 201.  
- (²) Port 1 may be fully pressurized, it's not intended for use as the valve's inlet.



### Ordering codes and description composition

EK10L/22 0 N B



#### 1 Cartridges

TYPE	CODE	DESCRIPTION
<b>SAE cavity 10/5</b>		
<b>EK10L/210NB</b>	0EK10002003	Without emergency, spool 21
<b>EK10L/220NB</b>	0EK10002000	Without emergency, spool 22
<b>EK10L/410NB</b>	0EK10002001	Without emergency, spool 41
<b>EK10L/420NB</b>	0EK10002004	Without emergency, spool 42

#### 2 Spool

TYPE	DESCRIPTION
<b>21</b>	Spool 21
<b>22</b>	Spool 22
<b>41</b>	Spool 41
<b>42</b>	Spool 42

#### 3 Emergency

TYPE	DESCRIPTION
<b>N</b>	Without emergency
<b>D</b>	Push/pull type with detent
<b>E</b>	Push/pull type without detent

#### 4 Seals

TYPE	DESCRIPTION
<b>B</b>	<b>NBR (Buna)+Polyurethane</b> o-ring seals, std configuration
<b>V</b>	<b>FPM (Viton)</b> o-ring seals, contact Sales Dept

#### 5 Coils

TYPE	CODE	DESCRIPTION
<b>BC12VDC</b>	4SL8000120	12VDC-ISO4400 coil

For complete coils list see page 201

#### 6 Valve body

TYPE	CODE	DESCRIPTION
<b>SAE10/5-SAE6</b>	3CC1050J11	Aluminium body for cavity 10 valve, SAE6 std thread

Note: aluminium body can stand up to 210 bar (3050 psi)  
For steel bodies or different threading see from page 214

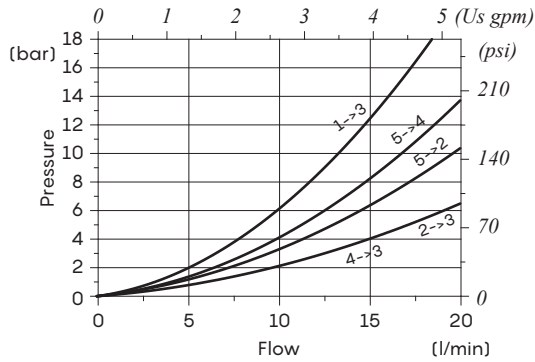
#### 7 Connector

TYPE	CODE	DESCRIPTION
<b>ISO4400</b>	4CN1009995B	Connector

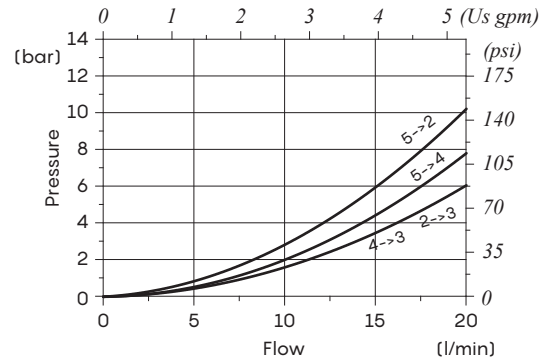
For complete connectors list see from page 201

**Rating diagrams**

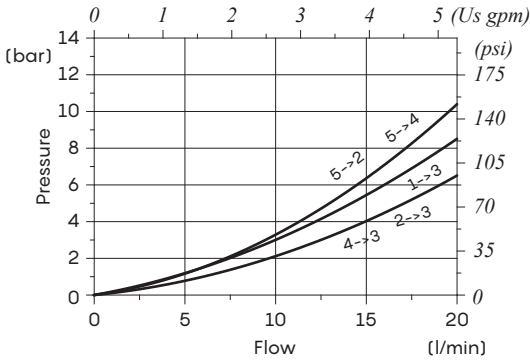
**EK10L pressure drop vs. flow**  
 spool 21



**EK10L pressure drop vs. flow**  
 spool 22



**EK10L pressure drop vs. flow**  
 spool 41



**EK10L pressure drop vs. flow**  
 spool 42

