



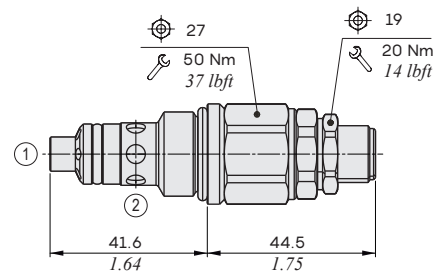
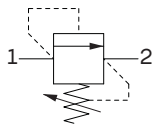
MC10MV type pressure relief valves - 2 way

- Direct acting
- Poppet type
- Mechanical control with screw adjustment
- Prepared for antitampering cap
- Different springs available to vary pressure range
- The backpressure values on line 2 must be added to valve nominal setting

Technical specifications and diagrams are measured with mineral oil of 46 cSt viscosity at 40°C (104°F) temperature.

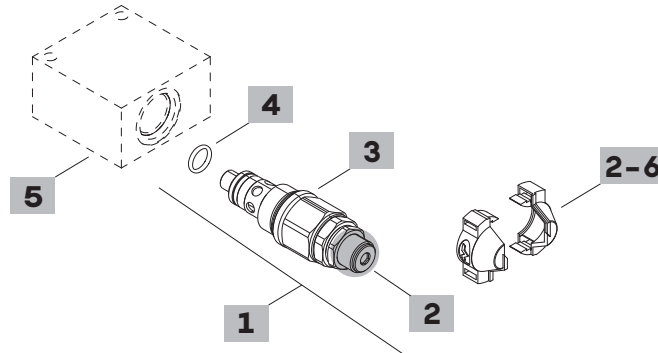
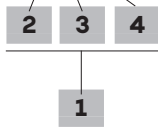
MC10MV		
Nominal flow		70 l/min (18.5 US gpm)
Max. pressure		260 bar (3770 psi)
Oil leakage	at 80% of max. pressure setting	0.25 cm ³ /min (0.015 in ³ /min)
Fluid		mineral based or synthetic hydraulic fluid with lubricating properties
Viscosity		10-200 cSt
Max level of contamination		20/18/14 ISO4406
Fluid temperature	with NBR seals+Polyurethane with FPM seals	from -25°C (-13°F) to 90°C (194°F) from -20°C (-4°F) to 110°C (230°F)
Environmental temp. for working conditions		from -20°C (-4°F) to 60°C (140°F)
Cavity		SAE 10/2 A
Weight		0.18 kg (0.396 lb)

NOTE - For different conditions, please contact Walvoil Sales Dpt.



Ordering codes and description composition

MC10MV/0Y2B



1 Cartridges

TYPE	CODE	DESCRIPTION
MC10MV/0Y1B	OMC100020A03	Pressure range 1
MC10MV/0Y2B	OMC100020A04	Pressure range 2
MC10MV/0Y3B	OMC100020A05	Pressure range 3
MC10MV/0Y4B	OMC100020A06	Pressure range 4

2 Adjustments

TYPE	DESCRIPTION
Y	With screw
X	Valve set with antitampering cap (part code: see point 6)

3 Pressure range

Standard setting is referred to 5 l/min (1.32 Us gpm) flow

TYPE	DESCRIPTION
1	Pressure range 5÷75 bar (72.5÷1100 psi); Std. setting 50 bar (725 psi)
2	Pressure range 76÷125 bar (1100÷1800 psi); Std. setting 80 bar (1160 psi)
3	Pressure range 126÷220 bar (1800÷3190 psi); Std. setting 175 bar (2540 psi)
4	Pressure range 215÷260 bar (3120÷3770 psi); Std. setting 220 bar (3190 psi)

4 Seals

TYPE	DESCRIPTION
B	NBR (Buna) o-ring seals, std configuration
V	FPM (Viton) o-ring seals, contact Sales Dept

5 Valve body

TYPE	CODE	DESCRIPTION
SAE10/2-SAE8	3CC1020K11	Aluminium body for cavity 10 valve, SAE8 std thread

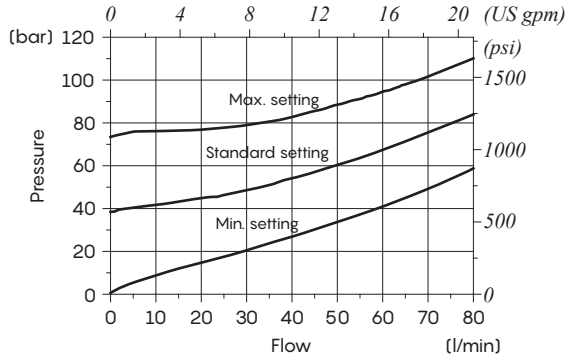
Note: aluminium body can stand up to 210 bar (3050 psi)
For steel bodies or different threading see from page 208

6 Accessories

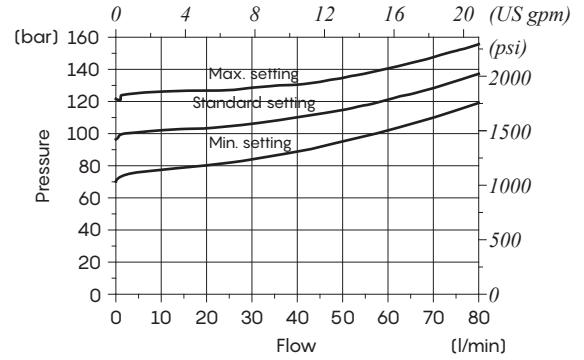
TYPE	CODE	DESCRIPTION
-	4COP126301	Antitampering cap (x2)

Rating diagrams

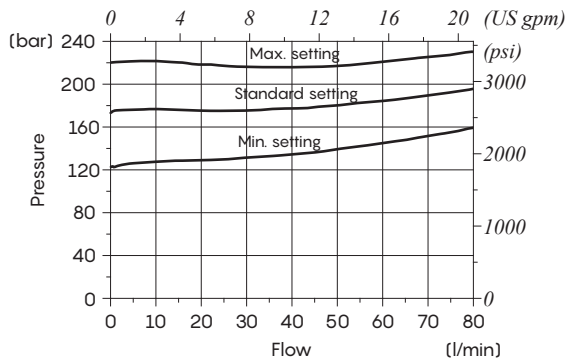
MC10MV pressure vs. flow
Pressure range 1



MC10MV pressure vs. flow
Pressure range 2



MC10MV pressure vs. flow
Pressure range 3



MC10MV pressure vs. flow
Pressure range 4

