



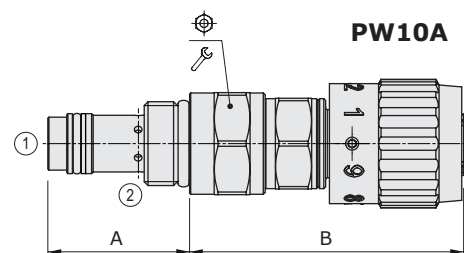
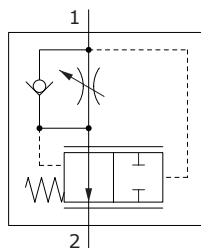
PW..A type flow control pressure compensated valves - 2 way

- With reverse free flow check
- From SAE08 to SAE16 cavities

Technical specifications and diagrams are measured with mineral oil of 46 cSt viscosity at 40°C (104°F) temperature.

| | PW08A | PW10A | PW12A | PW16A |
|--|-----------------------------------|---|-------------------------|-------------------------|
| Nominal flow | 10 l/min (2.6 US gpm) | 30 l/min (7.9 US gpm) | 50 l/min (13 US gpm) | 90 l/min (24 US gpm) |
| Max. pressure | 350 bar (5100 psi) | | | |
| Fluid | mineral based oil | | | |
| Viscosity | 10-200 cSt | | | |
| Max level of contamination | 20/18/14 ISO4406 | | | |
| Fluid temperature | with NBR seals with FPM seals | from -20°C (-4°F) to 80°C (176°F) from -20°C (-4°F) to 100°C (212°F) | | |
| Environmental temp. for working conditions | from -20°C (-4°F) to 50°C (122°F) | | | |
| Cavity | SAE 08/2 A | SAE 10/2 A | SAE 12/2 A | SAE 16/2 A |
| Weight | 0.22 kg (0.48 lb) | 0.30 kg (2.20 lb) | 0.72 kg (1.58 lb) | 0.98 kg (2.16 lb) |

NOTE - For different conditions, please contact Walvoil Sales Dpt.

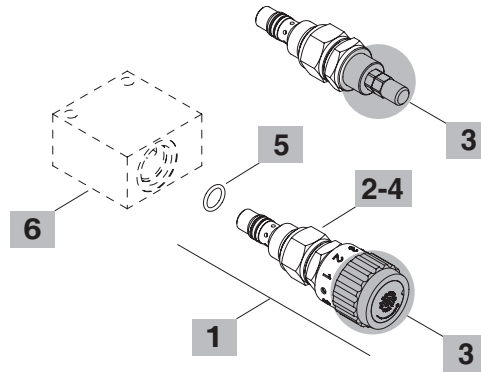
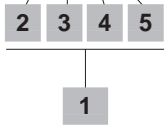


| Valve type | A | | B | | ⊕ | 🔧 | Nm | lbft |
|------------|------|------|------|------|----|-----|----|------|
| | mm | in | mm | in | | | | |
| PW08A/AM | 36.6 | 1.44 | 64.5 | 2.54 | 24 | 30 | 22 | |
| PW10A/AM | 37.5 | 1.48 | 71.9 | 2.83 | 27 | 50 | 36 | |
| PW12A/AM | 58.5 | 2.30 | 64.5 | 2.54 | 32 | 80 | 59 | |
| PW16A/AM | 68 | 2.68 | 86 | 3.39 | 41 | 100 | 74 | |

For dimensions with different type of adjustment see page 212

Ordering codes and description composition

PW08A/AM1B



1 Cartridges

| TYPE | CODE | DESCRIPTION |
|--------------------------|-------------|-----------------------|
| SAE cavity 08/2 A | | |
| PW08A/AM1B | 0PW08002000 | Handknob adjustment |
| PW08A/AS1B | 0PW08002003 | Screw type adjustment |
| SAE cavity 10/2 A | | |
| PW10A/AM1B | 0PW10002000 | Handknob adjustment |
| PW10A/AS1B | 0PW10002001 | Screw type adjustment |
| SAE cavity 12/2 A | | |
| PW12A/AM1B | 0PW12002000 | Handknob adjustment |
| PW12A/AS1B | 0PW12002001 | Screw type adjustment |
| SAE cavity 16/2 A | | |
| PW16A/AM1B | 0PW16002000 | Handknob adjustment |
| PW16A/AS1B | 0PW16002001 | Screw type adjustment |

2 Pressure drop from 1 to 2

| TYPE | DESCRIPTION |
|------|------------------|
| A | 12 bar (170 psi) |

3 Adjustments

| TYPE | DESCRIPTION |
|------|-------------|
| S | Screw |
| M | Handknob |

4 Pressure drop from 2 to 1

| TYPE | DESCRIPTION |
|------|-------------------|
| 1 | 0.5 bar (7.3 psi) |

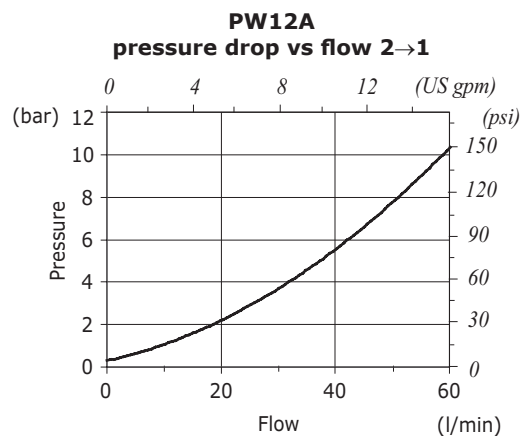
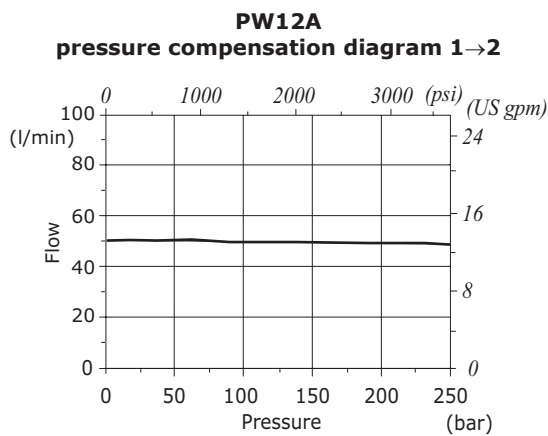
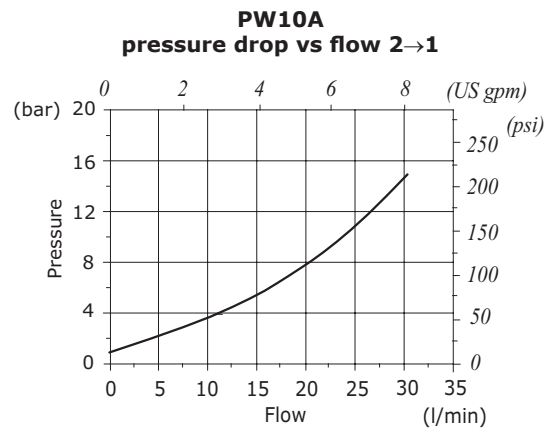
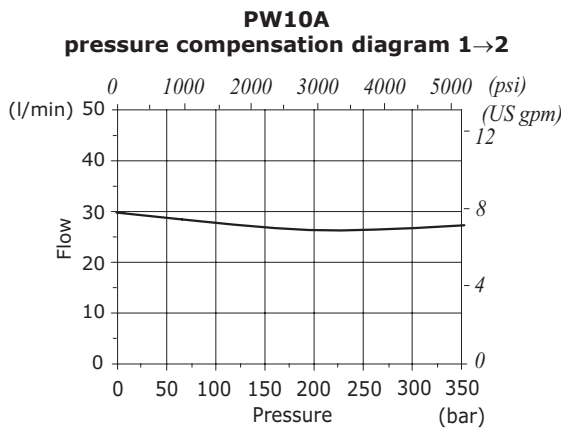
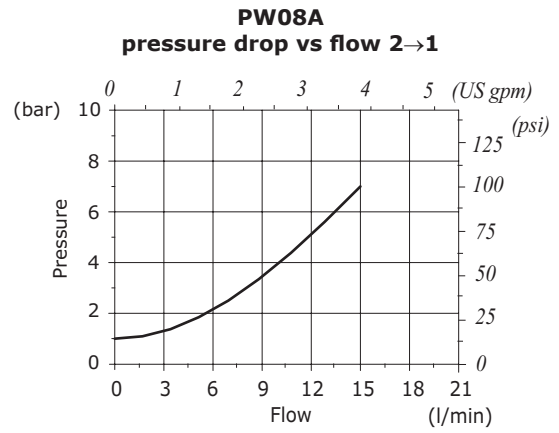
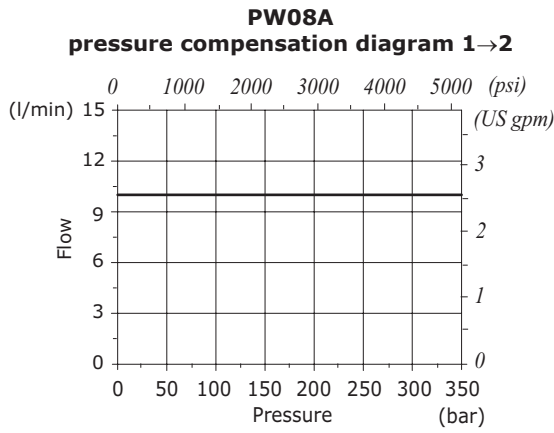
5 Seals

| TYPE | DESCRIPTION |
|------|---|
| B | NBR (Buna) Std configuration without addition |
| V | For valve with FPM (Viton) o-ring seals, contact Sales Dept. |

6 Valve body

| TYPE | CODE | DESCRIPTION |
|-----------------------|------------|---|
| SAE 08/2-G 3/8 | 3CC0820C11 | Aluminium body for cavity 08 valve, G3/8 std thread |
| SAE 10/2-G 3/8 | 3CC1020C11 | Aluminium body for cavity 10 valve, G3/8 std thread |
| SAE 12/2-G 1/2 | 3CC1220D11 | Aluminium body for cavity 12 valve, G1/2 std thread |
| SAE 16/2-G 3/4 | 3CC1620E11 | Aluminium body for cavity 16 valve, G3/4 std thread |

Note: aluminium body can stand up to 210 bar (3050 psi)
For steel bodies or different threading see from page 215



Rating diagrams

