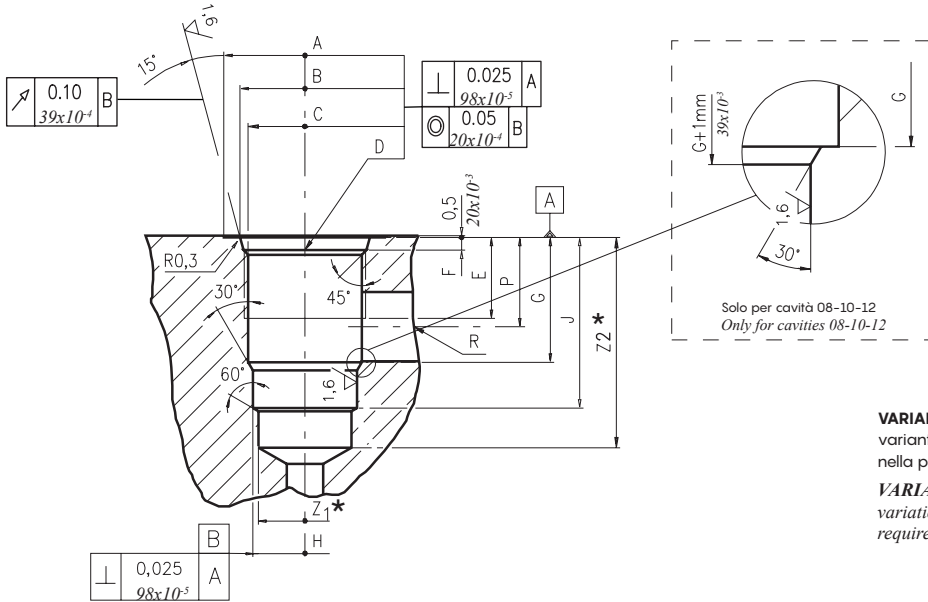


## Cavità SAE ed utensili - SAE cavities and tools

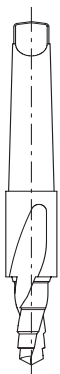
### Cavità SAE a 2 vie - 2 ways SAE cavity



**VARIANTE "A"**: le quote indicate con "\*" si riferiscono alla variante "A" e devono essere realizzate quando richiesto nella pagina specifica del prodotto alla voce "Cavità e Utensili"  
**VARIATION "A"**: the dimensions with "\*" are related to the variation "A" of 2 ways cavity. Features of variation "A" are required only if noted on specific product catalogue page.

Cavità Cavity	A	B ±0.05	C ±0.05	D	E	F	G	H ±0.02	J	K ±0.02	L	M ±0.02	N	P	R OMAX	S OMAX	T OMAX	U OMAX	V OMAX	X OMAX	Z1* OMIN	Z2* MIN
08/2	mm	27	20.66	17.42		12.5	2.5	18.2	12.72	29.5					14	8					12	39
08/2 A	in	1.06	0.81	0.68	3/4-16 UNF	0.49	0.10	0.72	0.50	1.16					0.55	0.31					0.47	1.53
09/2A	mm	27	20.66	17.42		13.5	2.5	18	15.9	29.5					14	8.5					14	35
	in	1.06	0.81	0.68	3/4-16 UNF	0.53	0.10	0.71	0.62	1.16					0.55	0.35					0.57	1.43
10/2	mm	30	24	20.62		16	2.8	24	15.9	33.5					18.3	11					14.5	40
10/2 A	in	1.18	0.94	0.81	7/8-14 UNF	0.63	0.11	0.94	0.62	1.32					0.72	0.43					0.57	1.57
12/2	mm	38	29.23	24.73		19	3.5	34.15	22.25	46.8					24.5	19					21.5	60
12/2 A	in	1.50	1.15	0.97	1 1/16-12 UNF	0.75	0.14	1.34	0.87	1.84					0.96	0.75					0.85	2.36
16/2	mm	45	35.6	31.34		22	3.50	34	28.62	47					24.5	19					25.5	70
16/2 A	in	1.77	1.40	1.23	1 5/16-12 UNF	0.87	0.14	1.34	1.13	1.85					0.96	0.75					1.00	2.75

#### Sgrossatore Rougher tool



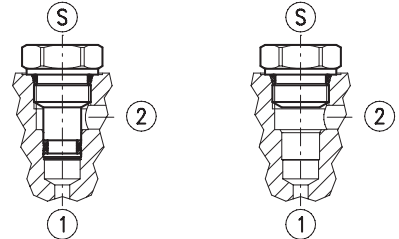
#### Alesatore Finisher tool



#### Maschiatore Tap



#### Tappi di chiusura Cavity plugs



Cavità Cavity	Codici ordinazione Ordering code
08/2	UDPF175030
08/2A	UDPF175030
09/2A	UDPF174230
10/2	UDPF20503F
10/2A	UDAS24003C
12/2	UDAS380031
12/2A	UDAS380031
16/2	UDPF313031
16/2A	UDPF313031

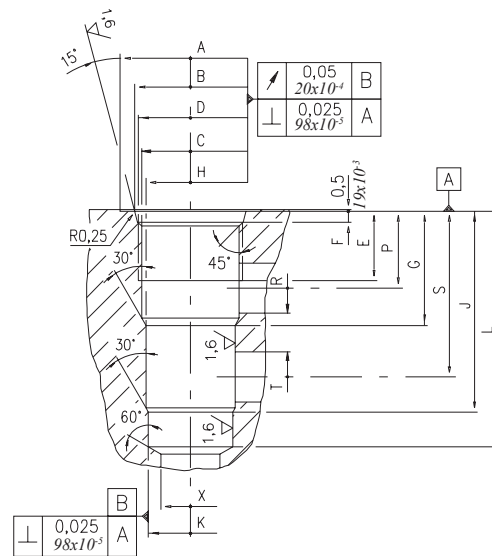
Cavità Cavity	Codici ordinazione Ordering code
08/2	UCAC127066
08/2A	UCAC127060
09/2A	UCAT159260
10/2	UCAC159080
10/2A	UCAC159080
12/2	UDAC222661
12/2A	UDAC222661
16/2	UDAC286261
16/2A	UDAC286261

Cavità Cavity	Codici ordinazione Ordering code
08/2	UCMS3/4161
08/2A	UCMS3/4161
09/2A	UCPL140020
10/2	UCMS7/8142
10/2A	UCMS7/8142
12/2	UCMS11/162
12/2A	UCMS11/162
16/2	UCMS15/160
16/2A	UCMS15/160

Cavità Cavity	Codici ordinazione Ordering code	①	②	③
08/2	3XTP3533700	X	X	X
08/2A	4TP5631500	0	0	X
09/2A	XTAP524340D	X	X	X
10/2	3XTP3544200	X	X	X
10/2A	3XTP1542300	0	0	X
12/2	3XTP3565400	X	X	X
12/2A	3XTP1552900	0	0	X
16/2	3XTP3575500	X	X	X
16/2A	3XTAP838200	0	0	X

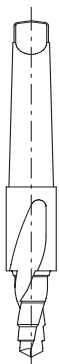
X=Chiuso - Closed  
0=Aperto - Open

**Cavità SAE a 3 vie - 3 ways SAE cavity**



Cavità Cavity	A	B ±0.05	C ±0.05	D	E	F	G	H ±0.02	J	K ±0.02	L	M ±0.02	N	P	R øMAX	S	T øMAX	U øMAX	V øMAX	X øMAX
08/3	mm 27	20.66	17.42	3/4 -16 UNF	12.5	2.5	19.1	15.90	33.3	14.3	43.3	-	-	14.3	5.5	28.6	5.5	-	-	12.5
	in 1.06	0.81	0.68		0.49	0.10	0.75	0.62	1.31	0.56	1.70	-	-	0.56	0.22	1.12	0.22	-	-	0.49
08/3C	mm 27	20.66	17.42	3/4 -16 UNF	10	2.5	14.3	15.9	25.2	14.3	31.5	-	-	10.5	5	21.5	5	-	-	12.5
	in 1.06	0.81	0.68		0.39	0.10	0.56	0.62	1.31	0.56	1.70	-	-	0.41	0.20	0.85	0.20	-	-	0.49
10/3	mm 30	24	20.62	7/8 -14 UNF	16	2.8	23.1	17.5	39.6	15.9	47.6	-	-	18.3	6.5	34	6.5	-	-	14
	in 1.18	0.94	0.81		0.63	0.11	0.94	0.69	1.56	0.62	1.87	-	-	0.72	0.25	1.34	0.25	-	-	0.55
10/3Q	mm 30	24	20.62	7/8 -14 UNF	14.2	2.5	17.75	19.05	39.7	17.475	47.6	-	-	14.2	4.4	31.2	14	-	-	12.5
	in 1.18	0.94	0.81		0.56	0.10	0.7	0.75	1.56	0.69	1.87	-	-	0.56	0.17	1.23	0.55	-	-	0.49
12/3	mm 38	29.23	24.73	1 1/16 -12 UNF	19	3.56	36.6	23.82	63.5	22.25	75.4	-	-	24.5	16	53	16	-	-	19
	in 1.50	1.15	0.97		0.75	0.14	1.44	0.94	2.5	0.88	2.97	-	-	0.96	0.63	2.09	0.63	-	-	0.75
16/3	mm 45	35.6	28.62	1 5/16 -12 UNF	22	3.5	36.5	28.62	64.3	27.02	75.3	-	-	24.5	16	53	16	-	-	19
	in 1.77	1.40	1.13		0.87	0.14	1.44	1.13	2.53	1.06	2.96	-	-	0.96	0.63	2.09	0.63	-	-	0.75
16/3Q	mm 45	35.55	31.34	1 5/16 -12 UNF	17.5	3.5	22.1	28.6	47.6	25.425	56.85	-	-	16.5	6	37	15.5	-	-	19
	in 1.77	1.40	1.23		0.69	0.14	0.87	1.13	1.87	1	2.24	-	-	0.65	0.24	1.46	0.61	-	-	0.75
20/3	mm 58	43.6	36.55	1 5/8 -12 UNF	21	3.5	46	36.55	87.6	33.37	100	-	-	31	25.4	71.5	25.4	-	-	30
	in 2.28	1.71	1.44		0.83	0.14	1.81	1.04	3.45	1.31	3.93	-	-	1.22	1	2.81	1	-	-	1.18

**Sgrossatore**  
Rougher tool



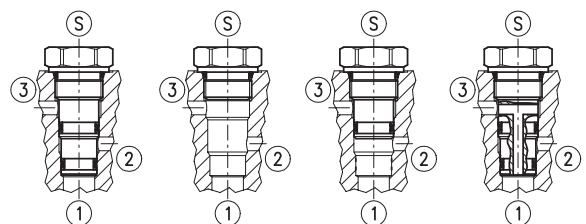
**Alesatore**  
Finisher tool



**Maschiatore**  
Tap



**Tappi di chiusura**  
Cavity plugs



Cavità Cavity	Codici ordinazione Ordering code	①	②	③	④
08/3	XTAP324541	X	X	X	X
	3XTAP822150	0	0	0	X
	XTAP324400	0	0	X	X
08/3C	XTAP324540	0	X	0	X
	XTAP824370	X	X	X	X
10/3	3XTAP822150	0	0	0	X
	3XTP3545700	X	X	X	X
	3XTP1542300	0	0	0	X
10/3Q	3XTP3545701	0	X	0	X
	XTAP327350	0	0	X	X
12/3	XTAP327573	X	X	X	X
	3XTP3558200	X	X	X	X
	3XTP1552900	0	0	0	X
16/3	3XTP3558201	0	X	0	X
	3XTP3578400	X	X	X	X
	3XTAP838200	0	0	0	X
16/3Q	XTAP341570	X	X	X	X

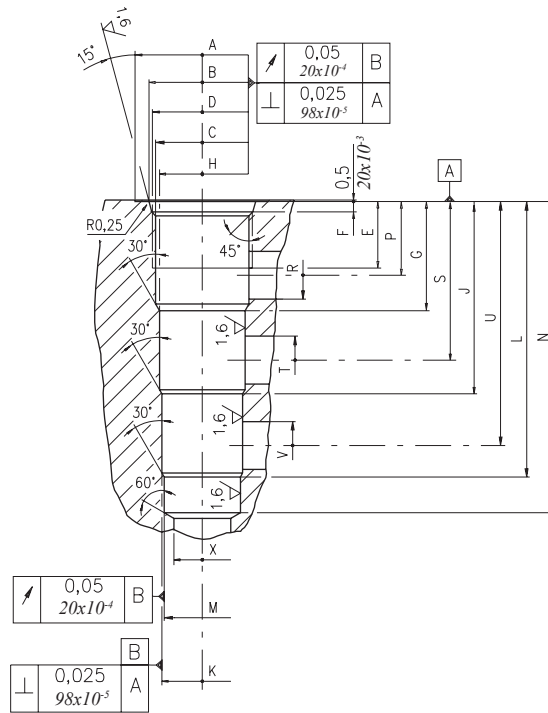
X=Chiuso - Closed / 0=Aperto - Open

Cavità Cavity	Codici ordinazione Ordering code
08/3	UDAS207021
08/3C	UDPF174021
10/3	UDPF205038
10/3Q	UDAS300031
12/3	UDAS380032
16/3	UDAS450032
16/3Q	UDAS450033
20/3	UT05X55380

Cavità Cavity	Codici ordinazione Ordering code
08/3	UDAS159064
08/3C	UDAS159063
10/3	UDAC175080
10/3Q	UDAS190560
12/3	UDAS238060
16/3	UDAS286261
16/3Q	UDAS286060
20/3	UT05X55390

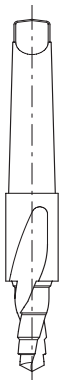
Cavità Cavity	Codici ordinazione Ordering code
08/3	UCMS3#4161
08/3C	UCMS3#4161
10/3	UCMS7#8142
10/3Q	UCMS7#8142
12/3	UCMS11#162
16/3	UCMS15#160
16/3Q	UCMS15#160
20/3	UCMS15#812

Cavità SAE a 4 vie - 4 ways SAE cavity



Cavità Cavity	A	B $\pm 0.05$	C $\pm 0.05$	D	E	F	G	H $\pm 0.02$	J	K $\pm 0.02$	L	M $\pm 0.02$	N	P	R oMAX	S oMAX	T oMAX	U oMAX	V oMAX	X oMAX
08/4	mm 28.00 in 1.10	20.66 0.81	17.42 0.68	3/4-16 UNF	12.5 0.49	2.5 0.10	19.1 0.75	15.9 0.62	33.3 1.31	14.3 0.56	47.6 1.87	12.72 0.50	57.6 2.27	14.3 0.56	5.5 0.22	28.6 1.12	5.5 0.22	42.9 1.69	5.5 0.22	11 0.43
10/4	mm 30 in 1.18	24.00 0.94	20.62 0.81	7/8-14 UNF	16 0.63	2.8 0.11	23.6 0.93	19.08 0.75	39.6 1.56	17.5 0.69	55.4 2.18	15.9 0.62	63.5 2.50	18.3 0.72	6.5 0.26	34 1.34	6.5 0.25	50 1.97	6.5 0.25	14 0.55
12/4	mm 38 in 1.50	29.23 1.15	24.73 0.97	1 1/16-12 UNF	19 0.75	3.56 0.14	29.5 1.16	23.82 0.94	51.5 2.03	22.25 0.87	73.6 2.90	20.65 0.81	83.33 3.28	21.5 0.85	11 0.43	43.5 1.71	11 0.43	66 2.60	11 0.43	19 0.75
16/4	mm 45 in 1.77	35.60 1.40	31.34 1.23	1 5/16-12 UNF	22 0.87	3.5 0.14	36.5 1.44	28.62 1.13	64.3 2.53	27.02 1.06	92.07 3.62	25.45 1.00	104 4.09	24.6 0.97	16 0.63	53 2.09	16 0.63	81.5 3.21	16 0.63	19 0.75

Sgrossatore  
Rougher tool



Cavità Cavity	Codici ordinazione Ordering code
08/4	UDAS207020
10/4	UDAS30003H
12/4	UDAS292020
16/4	UDAS356030

Alesatore  
Finisher tool



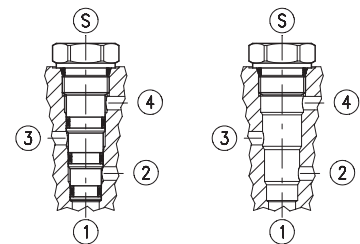
Cavità Cavity	Codici ordinazione Ordering code
08/4	UDAS170080
10/4	UDAS190861
12/4	UDAS238260
16/4	UDAS286262

Maschiatore  
Tap



Cavità Cavity	Codici ordinazione Ordering code
08/4	UCMS3/4161
10/4	UCMS7/8142
12/4	UCMS11/162
16/4	UCMS15/160

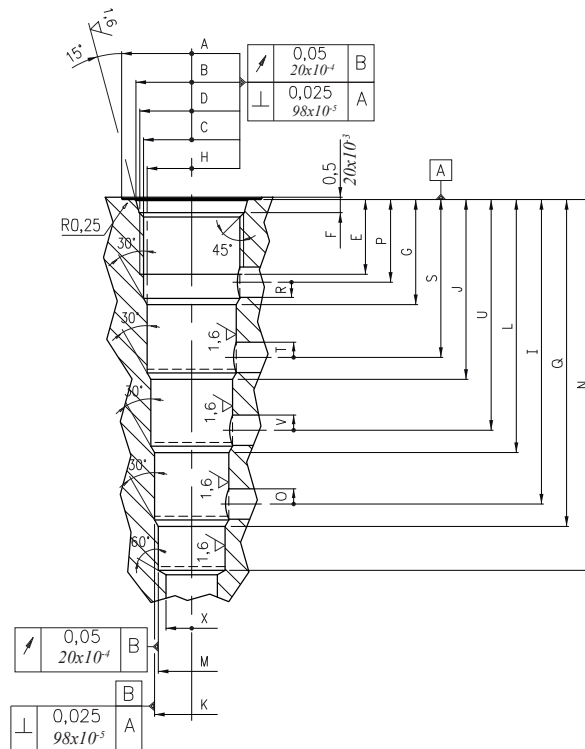
Tappi di chiusura  
Cavity plugs



Cavità Cavity	Codici ordinazione Ordering code	①	②	③	④	⑤
08/4	3XTP3536500	X	X	X	X	X
	3XTAP822150	0	0	0	0	X
10/4	3XTP3548301	X	X	X	X	X
	3XTP1542300	0	0	0	0	X
12/4	3XTP3559300	X	X	X	X	X
	3XTP1552900	0	0	0	0	X
16/4	3XTP3578300	X	X	X	X	X
	3XTAP838200	0	0	0	0	X

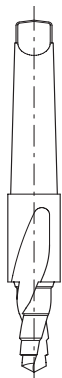
X=Chiuso - Closed  
0=Aperto - Open

**Cavità SAE a 5 vie - 5 ways SAE cavity**



Cavità Cavity	A	B $\pm 0.05$	C $\pm 0.05$	D	E	F	G	H $\pm 0.02$	I	J	K $\pm 0.02$	L	M $\pm 0.02$	N	O oMAX	P	Q	R oMAX	S	T oMAX	U	V oMAX	X oMAX
10/5	mm 30	24.00	20.62	7/8-14 UNF	16	2.8	22.5	19.08	65.2	38.5	15.9	54.2	14.3	79.4	3.25	17.7	70	3.25	33.8	3.25	49.4	3.25	11
	in 1.18	0.94	0.81		0.63	0.11	0.89	0.75	2.57	1.51	0.63	2.13	0.56	3.13	0.13	0.70	2.75	0.13	1.33	0.13	1.94	0.13	0.43

**Sgrossatore**  
*Rougher tool*



Cavità Cavity	Codici ordinazione Ordering code
10/5	UDPS188030

**Alesatore**  
*Finisher tool*



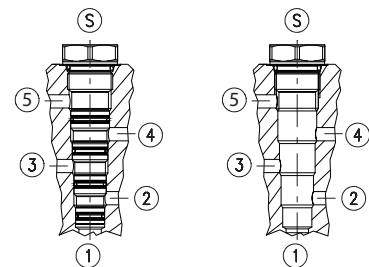
Cavità Cavity	Codici ordinazione Ordering code
10/5	UDPF204021

**Maschiatore**  
*Tap*



Cavità Cavity	Codici ordinazione Ordering code
10/5	UDAS190862

**Tappi di chiusura**  
*Cavity plugs*



Cavità Cavity	Codici ordinazione Ordering code	①	②	③	④	⑤	Ⓢ
10/5	XTAP327880	X	X	X	X	X	X
	3XTP1542300	0	0	0	0	0	X

X=Chiuso - Closed  
0=Aperto - Open